

# 2024

## Task Group Annual Report

We help people with mood disorders live healthier lives through advanced research delivering innovative treatment solutions with meaningful impact.



# Table of Contents

Our Strategic Framework	1
Our Members	2
Advancing Scientific Discovery: NNDC Task Groups	3
Task Group Summary of Focus	4
Task Group Co-Chairs	5
Biomarkers	6
Bipolar Disorders	8
Child & Adolescent Mood Disorders	10
College Mental Health	12
Geriatric Mood Disorders	13
Ketamine	14
Neuromodulation	15
Psychedelics & Related Compounds	16
Suicide Prevention	17
Treatment-Resistant Depression	18
Women & Mood Disorders	19



# Our Strategic Framework

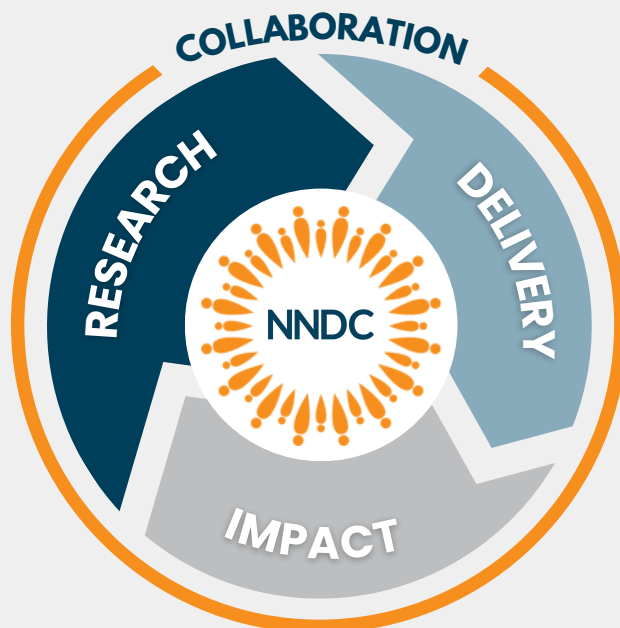
The National Network of Depression Centers (NNDC) is a collaboration among [27 leading academic medical centers](#) across the U.S. and Mexico. The NNDC enables our world-class researchers, clinicians, and other professionals in psychiatry and associated disciplines to accelerate the discovery and adoption of breakthrough therapies, and bridge the connection between mental and physical health. Through our commitment to cutting-edge science and training next-generation leaders, we are a powerful force for driving progress in brain health and advancing data-driven, actionable mental health care for current and future generations.

**Research:** Advancing scientific mental health research & discovery

**Delivery:** Driving innovative access, coverage & high-value care delivery options that can be scaled

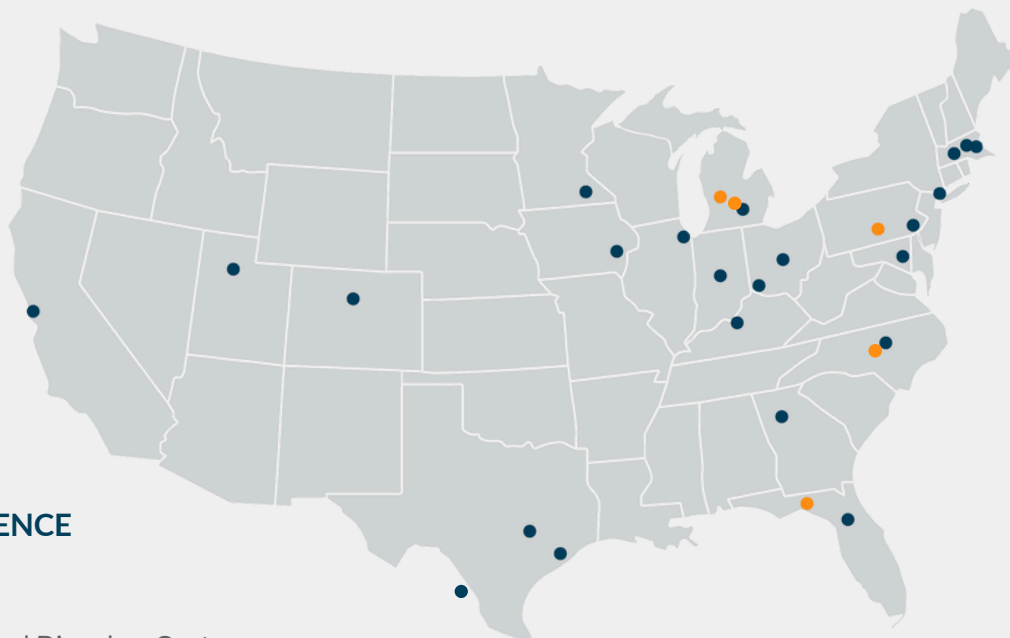
**Impact:** Transforming people's lives through education & advancing collective impact

**Collaboration:** Harnessing the power of the Network through strategic partnerships, collaboration and mentorship



# Our Members

The NNDC is comprised of major academic medical centers from around the country. By uniting our Centers of Excellence and our Members in a collaborative network, the strongest players in the field grow even stronger. The NNDC combines unparalleled expertise and leverages best-in-class resources to advance state-of-the-science in the mental health field.



## CENTERS OF EXCELLENCE

- Emory University
- Indiana University
- Johns Hopkins Medicine Mood Disorders Center
- Mass General Brigham — Harvard Medical School
- Mayo Clinic
- McLean Hospital — Harvard Medical School
- The Ohio State University
- Stanford University
- Universidad Autonoma de Nuevo Leon (UANL)
- University of Cincinnati & Lindner Center of HOPE
- Helen and Arthur E. Johnson Depression Center at the University of Colorado Anschutz Medical Campus
- University of Florida Health, Mood Disorders Program
- University of Illinois at Chicago
- University of Iowa Mood Disorders Center
- University of Louisville Depression Center
- University of Michigan Frances and Kenneth Eisenberg and Family Depression Center
- University of Pennsylvania
- Dell Medical School at The University of Texas at Austin
- The University of Texas Health Science Center at Houston
- University of Utah
- Weill Cornell Medicine

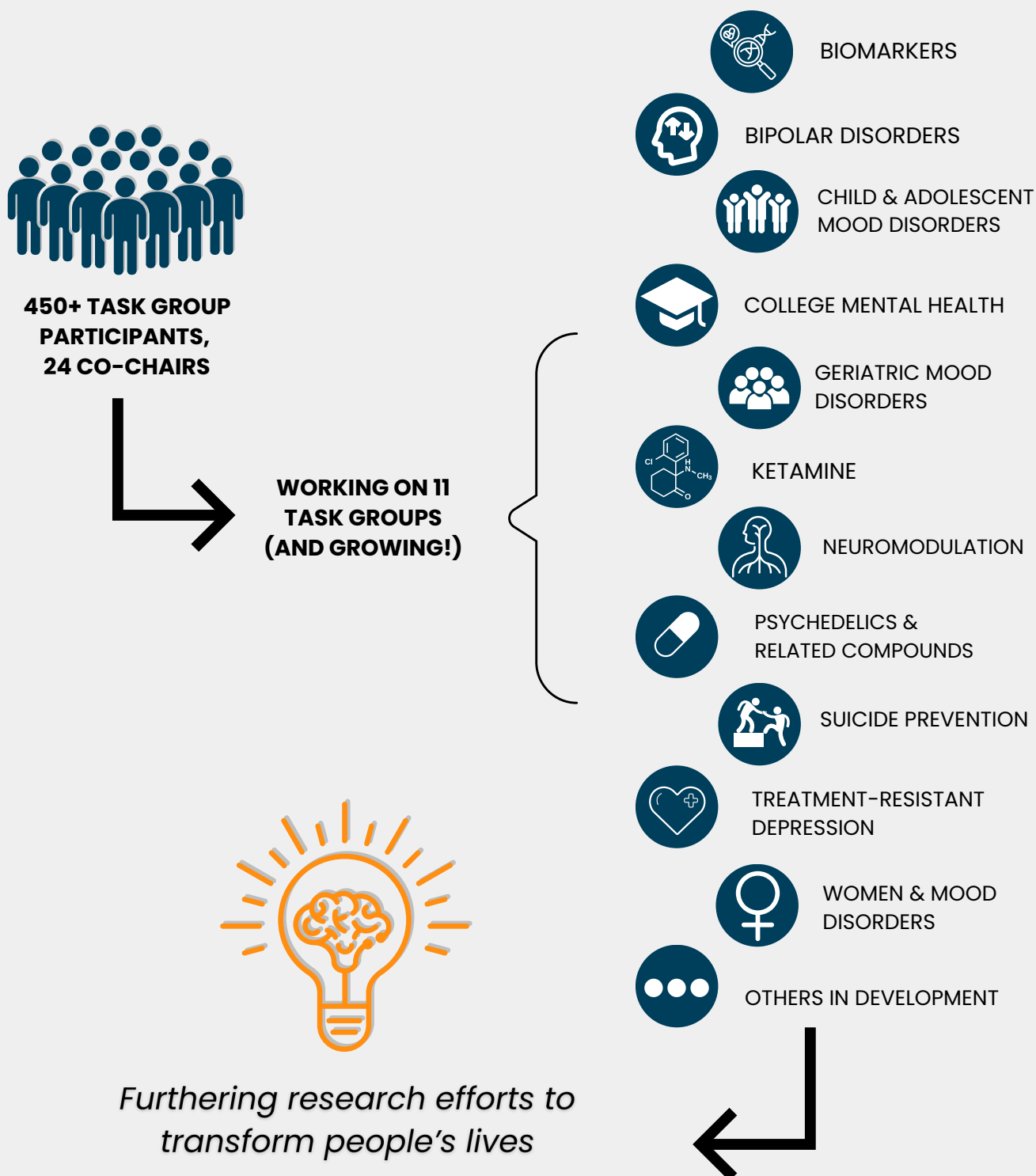


## MEMBERS

- Florida State University College of Medicine
- Michigan State University & Pine Rest Christian Mental Health Services
- Penn State Health Milton S. Hershey Medical Center
- University of North Carolina at Chapel Hill School of Medicine
- Van Andel Institute, Western Michigan University Homer Stryker M.D. School of Medicine and Western Michigan University

# Advancing Scientific Discovery: NNDC Task Groups

Much of the NNDC's innovative work is driven by our task groups – multidisciplinary teams of leading clinicians and researchers from our member sites who dedicate their time and expertise to advancing initiatives focused on the diagnosis, treatment, and prevention of depressive disorders. This unique collaborative platform allows these leading experts to tackle pressing mental health challenges through focused areas of interest.



## Summary of Focus: NNDC Task Groups

**Biomarkers:** The Biomarkers Task Group leads efforts to identify and validate biological markers associated with depressive disorders. The group actively works to develop and refine diagnostic methodologies, integrating findings from current studies to inform and shape future research trajectories in biomarker discovery and clinical application.

**Bipolar Disorders:** The Bipolar Disorders Task Group supports and guides cutting-edge research initiatives aimed at deepening our understanding of the genetic and biological origins of bipolar disorder. The group has played a key role in advancing critical research and accelerating scientific discovery in this field.

**Child & Adolescent Mood Disorders:** The Child & Adolescent Mood Disorders Task Group focuses on the unique needs of children and adolescents – an often-underrepresented population in mental health research and clinical innovation. Recognizing that pediatric patients require developmentally tailored approaches, the group works to advance research, implement clinical initiatives, and promote advocacy aimed at improving outcomes in youth mental health.

**College Mental Health:** The College Mental Health Task Group addresses the growing need for evidence-based guidance and interventions tailored to the mental health challenges faced by college students. This critical developmental period – marked by major life transitions, increased independence, and complex decision-making – can heighten vulnerability to mental health concerns. The group collaborates to identify effective strategies that support students' well-being and promote successful transitions into adulthood.

**Geriatric Mood Disorders:** The Geriatric Mood Disorders Task Group focuses on the complex mental health needs of older adults from diverse populations. Its efforts aim to improve care delivery, foster education, advance multi-site research initiatives, and advocate for policies that support this growing and often vulnerable demographic.

**Ketamine:** The Ketamine Task Group serves as a forum to share information, discuss best practices, and learn from each other's experiences as ketamine and esketamine clinics are established and expanded across the network. The group explores ways to support clinicians and staff involved in the delivery of ketamine-based treatments to ensure safe and effective care.

**Neuromodulation:** The Neuromodulation Task Group focuses on identifying best practices for Electroconvulsive Therapy (ECT), Transcranial Magnetic Stimulation (TMS) and other neuromodulation strategies, educating practitioners and the public about their safety and efficacy, and advocating to expand the use of these treatments in managing depressive illnesses.

**Psychedelics and Related Compounds:** The Psychedelics & Related Compounds Task Group shares information on designing and conducting clinical trials of psychedelic drugs and related psychoactive compounds for major depression, related disorders, and co-occurring conditions. The group focuses on the empirical evaluation of therapeutic approaches and best practices for delivering psychedelic therapies.

**Suicide Prevention:** The Suicide Prevention Task Group leverages the expertise of its members to strengthen suicide prevention efforts across all age groups. The group has provided substantial feedback on suicidality measures for the NNDC Common Assessment Package and explored strategies to enhance the use of electronic health record tools for identifying and supporting individuals at risk of suicidal thoughts and behaviors.

**Treatment-Resistant Depression:** The Treatment-Resistant Depression Task Group focuses on patients who do not respond to currently available treatments for depression. While it is increasingly clear that treatment-resistant depression has distinct pathology, much remains unknown about why some individuals respond effectively to treatments and others do not, or lose response over time. This group works on developing research, treatment, and educational strategies to better understand these differences, improve outcomes, and personalize care for treatment-resistant depression.

**Women & Mood Disorders:** Women are twice as likely as men to experience mood disorders, with nearly one-quarter of women affected by depression during their lives. The Women & Mood Disorders Task Group applies evidence-based research methods to understand and address the unique biological and psychological challenges women face at key life stages – such as pregnancy, postpartum, and menopause – and to identify best practices for treatment.

# Task Group Co-Chairs

## **Biomarkers**

Mark Frye, MD – Mayo Clinic

Faith Gunning, PhD – Weill Cornell Medicine

## **Bipolar Disorders**

Jorge Almeida, MD, PhD – University of Texas at Austin/UT Health Houston

Katherine Burdick, PhD – Mass General Brigham – Harvard Medical School

Michael J. Ostacher, MD, MPH – Stanford University

## **Child & Adolescent Mood Disorders**

Leslie Miller, MD – Johns Hopkins University

Sally Weinstein, PhD – University of Illinois at Chicago

## **College Mental Health**

Meera Menon, MD – The Ohio State University

Michelle Vo, MD – University of Utah

## **Geriatric Mood Disorders**

Regan Patrick, PhD – McLean Hospital

Antonio Teixeira, MD, PhD – UT Health Houston

## **Ketamine**

Robert Meisner, MD – McLean Hospital

Mark Niciu, MD, PhD – University of Iowa

## **Neuromodulation**

Daniel Maixner, MD – University of Michigan

Nicholas Trapp, MD, MS – University of Iowa

## **Psychedelics and Related Compounds**

Fred Barrett, PhD – Johns Hopkins University

Trisha Suppes, MD, PhD – Stanford University

## **Suicide Prevention**

William Coryell, MD – University of Iowa

Marie Gaine, PhD – University of Iowa

## **Treatment-Resistant Depression**

Susan Conroy, MD, PhD – Indiana University

Jay Fournier, PhD – The Ohio State University

Patricio Riva Posse, MD – Emory University

## **Women & Mood Disorders**

Sarah Nagle-Yang, MD – University of Colorado Anschutz Medical Campus

Aysegul Ozerdem, MD, PhD – Mayo Clinic

## Advancing Scientific Discovery: NNDC Task Groups

### BIOMARKERS



**Project:** Change in neurocognitive functioning in patients with treatment-resistant depression with serial intravenous ketamine infusions: The Bio-K multicenter trial

**Leaders:** B. Singh, S. Parikh, J. Vande Voort, V. Pazdernik, E. Achtyes, F. Goes, A. Yokum, L. Nykamp, A. Becerra, L. Smart, J. Greden, W. Bobo, M. Frye, K. Burdick, K. Ryan

**Status/Notes:** [Published in Psychiatry Research](#)

**Project:** Treatment-resistant depression patients with baseline suicidal ideation required more treatments to achieve therapeutic response with ketamine/esketamine

**Leaders:** B. Singh, J. Vande Voort, V. Pazdernik, M. Frye, S. Kung

**Status/Notes:** [Published in the Journal of Affective Disorders](#)

**Project:** Immune and metabolic markers of ketamine response in treatment-resistant depression

**Leaders:** E. Achtyes, S. Murata, Z. Madaj

**Status/Notes:** Resubmitted to Biological Psychiatry

**Project:** Symposium at APA: Immune and metabolic markers; BDNF

**Leaders:** B. Singh, S. Murata, F. Goes

**Status/Notes:** Completed

**Project:** Utilizing depression symptom-based phenotypes to explore ketamine treatment response in major depression: The Bio-K multicenter trial

**Leaders:** B. Penaluna, J. Vande Voort, W. Bobo, V. Pazdernik, E. Achtyes, F. Goes, J. Greden, S. Parikh, M. Frye, B. Singh

**Status/Notes:** Submitted to the Journal of Affective Disorders

**Project:** Summary of insulin-stimulated immunometabolic biomarker analyses

**Leader:** S. Tye

**Status/Notes:** Nearing completion

**Project:** Mitochondrial energetics and ketamine response

**Leader:** S. Tye

**Status/Notes:** Nearing completion

**Project:** Extracellular vesicles in circulating blood

**Leader:** S. Sabunciyen

**Status/Notes:** R21 submitted

There are an additional 9 studies of biospecimens undergoing lab analysis.





## Advancing Scientific Discovery: NNDC Task Groups

### BIOMARKERS, *CONT.*



- **What have been the major challenges experienced by the team while working toward your goals?**
  - One persistent challenge has been securing adequate statistical support – this remains an unresolved issue.
  - Another significant obstacle involves the logistical complexities with coordinating submission of large multi-author papers. The process of managing conflicts of interest, formatting references according to journal guidelines, and navigating submission requirements often results in delays. These steps are time-consuming and slow overall progress.
- **How can NNDC leadership & staff assist you in addressing any challenges faced by the task group/team?**
  - It would be extremely helpful if the NNDC could provide some dedicated administrative support for manuscript preparation. Assistance with tasks such as reference formatting, managing author disclosures, and finalizing submissions for journals would significantly reduce the administrative burden on the team.
- **What are some future goals for the task group/team? Please add specific possible projects and activities.**
  - A key goal is to complete remaining biomarker analyses and publish findings.
  - As the NNDC explores future collaborations with industry, the Biomarkers Task Group would like to be actively involved in shaping and contributing to those partnerships. We see this as a promising direction for impactful, large-scale collaboration.



## Advancing Scientific Discovery: NNDC Task Groups

### BIPOLAR DISORDERS



**Project:** Bipolar Clinics Work Group presentations

**Leaders:** R. De Paulo, J. Almeida, F. Goes

**Status/Notes:** Completed — Michael Gitlin presented on establishing the UCLA Bipolar Clinic with lessons learned, etc.

**Project:** Bipolar Clinics Survey of NNDC sites

**Leader:** C. Schneck

**Status/Notes:** Completed — Survey to inform paper about best practices for creating and maintaining a bipolar clinic

**Project:** Bipolar Clinics: Paper about best practices for creating and maintaining a bipolar clinic

**Leader:** C. Schneck

**Status:** Ongoing

**Project:** Brain Stimulation Project: Manuscript on clinical outcomes of the pilot

**Leaders:** J. Almeida, P. Zandi

**Status/Notes:** Completed — [Published in the Journal of Affective Disorders](#)

**Project:** Brain Stimulation Project: Manuscript on imaging findings of the pilot

**Leaders:** J. Almeida, P. Zandi

**Status/Notes:** Ongoing — Journal to be determined

**Project:** Brain Stimulation Project: Proposal for a symposium submitted to the International Brain Stimulation Conference in Japan

**Leaders:** J. Almeida, P. Zandi

**Status/Notes:** Completed — Proposal was accepted

**Project:** Brain Stimulation Project: Poster at APA 2024 Annual Meeting

**Leader:** J. Almeida presented

**Status:** Completed

**Project:** Learning Health Network manuscript (*Momentum Grant funding*)

**Leaders:** J. Lipschitz, P. Zandi, J. Fiedorowicz

**Status/Notes:** Completed — [Published in the Journal of Affective Disorders](#)

**Project:** Learning Health Network: Abstract submitted to present at APA 2025 Annual Meeting

**Leaders:** J. Lipschitz

**Status/Notes:** Completed — Proposal not accepted

**Project:** Group Medical Visits for Bipolar Disorder: Poster at ACNP 2024 Annual Conference

**Leader:** S. Parikh

**Status:** Completed

**Project:** Manuscript on Group Medical Visits for Bipolar Disorder

**Leader:** S. Parikh

**Status/Notes:** Completed — [Published in Academic Psychiatry](#)



## Advancing Scientific Discovery: NNDC Task Groups

### BIPOLAR DISORDERS, *CONT.*



**Project:** BD<sup>2</sup> Integrated Network

**Leader:** K. Burdick

**Status/Notes:** Ongoing — Several NNDC member sites are participating in the Integrated Network including: Johns Hopkins University, Mass General Brigham - McLean, Mayo Clinic, UT-Houston, University of Cincinnati/Lindner Center of HOPE and University of Michigan

- 
- **What have been the major challenges experienced by the team while working toward your goals?**
    - Managing time constraints and balancing competing meetings continues to be a challenge.
    - The limited funding available through the Momentum Grant program (maximum of \$10,000) is often insufficient – particularly for early-career investigators – to effectively explore research questions, even at a pilot level.
  - **How can NNDC leadership & staff assist you in addressing any challenges faced by the task group/team?**
    - Clearer communication of NNDC priorities to task group members would support the development of Momentum Grant proposals and other initiatives that align with organizational goals.
    - Implement an AI-powered note-taking tool and distribute meeting summaries to keep all members informed, including those unable to attend.
    - Develop a marketing document for the Bipolar Disorders Task Group to support funding efforts, particularly benefiting early-career investigators.
  - **What are some future goals for the task group/team? Please add specific possible projects and activities.**
    - Develop a best practices paper on establishing and sustaining a bipolar clinic, drawing on insights from the Bipolar Clinics Work Group members and activities.
    - Finalize the manuscript on imaging findings from the Brain Stimulation Project pilot study.
    - Investigate the feasibility of conducting a large-scale study focused on mixed states.



## Advancing Scientific Discovery: NNDC Task Groups

### CHILD & ADOLESCENT MOOD DISORDERS



**Project:** Pilot Study to Examine the Utility and Feasibility of Implementing Brief Cognitive Assessment in Clinical Practice for Youth with Bipolar Disorder – numerous NNDC sites invited to participate (*Momentum Grant funding*)

**Leader:** R. Huber

**Status:** Ongoing

**Project:** Challenges and opportunities in using cognitive screeners in clinical practice for youth with bipolar disorder: Insights from NNDC clinicians – Poster presentation at NNDC 2024 Annual Meeting

**Leaders:** R. Huber, L. Miller, S. Weinstein, A. Sullivan, M. Batt, J. Vande Voort, M. Westlund Schreiner, F. Are, I. Douka, M. Delbello, M. Singh, L. Hulvershorn, R. Boodoo, J. Brasic, N. Ghaziuddin, R. Dopp & members of the NNDC Child and Adolescent Mood Disorders (CAMD) Task Group

**Status:** Completed

**Project:** Challenges and opportunities in using cognitive screeners for youth with bipolar disorder: Insights from NNDC clinicians

**Leaders:** R. Huber and CAMD Task Group members

**Status/Notes:** Completed – [Published in FOCUS: The Journal of Lifelong Learning in Psychiatry](#)

**Project:** Journal of Affective Disorders, Letter to the Editor on ECT

**Leaders:** N. Ghaziuddin, S. Weinstein, L. Miller with Neuromodulation Task Group and CAMD Task Group

**Status:** Completed – [Published in the Journal of Affective Disorders](#)

**Project:** ECT Cognition in Adolescents - Literature Review

**Leader:** N. Ghaziuddin

**Status/Notes:** Ongoing – *Collaborative effort with the Neuromodulation Task Group*

**Project:** Adolescent Psychiatry; 3 manuscripts related to CBD in pediatric population

**Leaders:** Many CAMD Task Group members

**Status:** Completed:

- **Published in Adolescent Psychiatry:** [Review of the Efficacy and Safety of Cannabidiol with a Focus on Children and Adolescents in the Treatment of Psychiatric Symptoms and Disorders](#)
- **Published in Adolescent Psychiatry:** [Identifying Cannabidiol \(CBD\) Research Priorities Relevant to Child and Adolescent Psychiatry](#)
- **Published in Adolescent Psychiatry:** [Impact of Changing Cannabis Laws on Cannabis Use Disorders, Serious Mental Illness, and Mortality Outcomes in US Youth: A Narrative Review](#)

**Project:** Impact of state marijuana legalization on attitudes, perceptions, and behaviors of US adolescents receiving mood disorder treatment and their parents (*Momentum Grant funding*)

**Leaders:** C. Hammond, M. Fristad, Y. Moon, M. Batt, R. Dopp, N. Ghaziuddin, L. Hulvershorn, J. Leffler, M. Singh, A. Sullivan, S. Weinstein, L. Miller

**Status/Notes:** Ongoing – Manuscript under review

**Project:** Marijuana Summit with SAM (Smart Approaches to Marijuana)

**Leaders:** L. Hulvershorn, S. Charney, C. Hammond, L. Miller, S. Weinstein

**Status:** Ongoing



## Advancing Scientific Discovery: NNDC Task Groups

### CHILD & ADOLESCENT MOOD DISORDERS, *CONT.*



- **What have been the major challenges experienced by the team while working toward your goals?**
  - It is challenging for task group members to carve out time to meet while managing competing demands.
  - Momentum Grant issues:
    - There is limited resourcing for IRB preparation and submission, and no ability to allow use of a central IRB. This often presents a challenge for multi-site participation in Momentum Grant projects, impacting data recruitment and our ability to apply for larger grants.
    - No funding is available for research assistant support.
- **How can NNDC leadership & staff assist you in addressing any challenges faced by the task group/team?**
  - Momentum Grant suggestions:
    - Develop an NNDC central infrastructure to support (administrative) Momentum Grant projects and help coordinate across sites.
    - Adjust the requirements around the length of time for Momentum Grants (currently limited to one year, with extensions).
      - If the grant is for a clinical study, it would be helpful to start with a two-year timeframe, with the option to extend an additional year. This is especially needed if multiple sites are involved, adding to the complexity of the project and the time required.
      - If the project is for a single-site study, the current timeframe makes sense; but the NNDC is promoting collaboration across sites and that requires more time.
    - Consider offering multiple levels of funding.
- **What are some future goals for the task group/team? Please add specific possible projects and activities.**
  - Pilot Study to Examine the Utility and Feasibility of Implementing Brief Cognitive Assessment in Clinical Practice for Youth with Bipolar Disorder – Complete the patient portion of the project and publish a manuscript on the project process and results.
  - Analyze the MOP data for teens and young adults and publish a manuscript.
  - Complete the ECT Cognition in Adolescents lit review and publish the results.



## Advancing Scientific Discovery: NNDC Task Groups

### COLLEGE MENTAL HEALTH



**Project:** Parent Involvement review paper

**Leader:** B. Busch

**Status/Notes:** Completed — [Published in Focus - The Journal of Lifelong Learning in Psychiatry](#)

- **What have been the major challenges experienced by the team while working toward your goals?**
  - As clinicians with a strong interest in research – but not primarily researchers – our capacity to complete projects is limited by clinical demands.
  - A broader shift at both local and national levels toward deprioritizing education has made it challenging to secure the resources needed for this work, especially when its value is not fully recognized by leadership.
- **How can NNDC leadership & staff assist you in addressing any challenges faced by the task group/team?**
  - Consider developing an NNDC position paper addressing the growing shortage of resources for mental health services on college campuses. The current constraints make it increasingly difficult to deliver the standard of care students deserve.
- **What are some future goals for the task group/team? Please add specific possible projects and activities.**
  - Enhancing College Mental Health: Understanding Student Support Systems. This project will leverage existing data from the Healthy Minds Study (HMS) to:
    - Identify the key individuals who make up college students' support systems.
    - Examine how these support systems are involved in students' mental health care.
    - Analyze whether family support predicts mental health treatment engagement or lower rates of depression.
    - Offer recommendations for effectively engaging support systems to strengthen student mental health and resilience.
- **Other comments:**
  - We offer peer supervision to one another, dedicating time to support colleagues across the nation through shared challenges and collaborative guidance.



## Advancing Scientific Discovery: NNDC Task Groups

### GERIATRIC MOOD DISORDERS



**Project:** Treatment-resistant depression in older adults

**Leader:** R. Patrick

**Status/Notes:** Completed – [Published in the Journal of Affective Disorders](#)

**Project:** Review on cognitive impairment in older adults with depression

**Leaders:** A. Teixeira, M. Gentry, A. Gregg, S. Gujral, L. Oberlin, O. Ajilore, S. Weisenbach, R. Patrick, E. Rapp

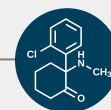
**Status/Notes:** Completed – [Published in FOCUS: The Journal of Lifelong Learning in Psychiatry](#)

- 
- **What have been the major challenges experienced by the team while working toward your goals?**
    - Despite ongoing challenges in finding time and resources for larger initiatives, our group has remained consistently productive.
  - **How can NNDC leadership & staff assist you in addressing any challenges faced by the task group/team?**
    - Gaining a clear understanding of the NNDC's mission, vision, and strategic direction is helpful for identifying the most valuable projects to pursue. During a recent leadership transition, we encountered some communication gaps and a temporary loss of momentum. A well-defined strategic plan will help minimize such disruptions in the future.
    - Developing a shared database or collaborative platform for all task groups would improve transparency and accessibility of each group's activities and data resources. Such a system would foster greater collaboration and synergy across the groups.
    - It would be valuable to have Peter Zandi present on the Mood Outcomes Program and share insights from the data it provides.
    - The support our group has received has been outstanding!
  - **What are some future goals for the task group/team? Please add specific possible projects and activities.**
    - A Momentum Grant application was awarded for Expansion of Multi-Site Database for Geriatric Mood Disorders. There are two aims for the project:
      - Database completion – a database was initially created with support of an NNDC Momentum Grant (07/2017) to centralize existing clinical, neuropsychological, and neuroimaging data from those with late-life mood disorders (LLMDs). This grant allows inclusion of data from additional member sites.
      - Database analysis – the database will be utilized to determine cognitive, medical, and neuroimaging correlates of late-life depression and bipolar disorder subtypes. Mood disorders in older adults are heterogenous and impairing, with an associated increase in dementia risk. Characterizing subtypes of LLMD will support early detection, as well as the development of targeted interventions to improve cognitive trajectories of older adults.
    - Further projects to be determined.



## Advancing Scientific Discovery: NNDC Task Groups

### KETAMINE



**Project:** Ketamine/Esketamine Psychometric Database spreadsheet

**Leader:** B. Kitay

**Status/Notes:** Ongoing

**Project:** Consensus document on evidence-based best practices regarding ketamine treatments – Momentum Grant application

**Leaders:** R. Meisner, M. Niciu

**Status/Notes:** Completed – Application awarded

**Project:** PSFC Application for Ketamine Training Program

**Leaders:** R. Meisner, M. Niciu, S. Charney and Steering Committee (*members to be determined*)

**Status/Notes:** Conceptualizing

**Project:** Treatment Resistant Mental Health Workplace Impact

**Leaders:** M. Samocki, R. Meisner, S. Charney, M. Frye, R. Vallentine

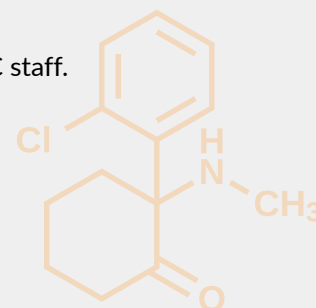
**Status/Notes:** Completed – This was a collaboration with TARA Mind. NNDC was represented remotely on the panel.

**Project:** Proposal to Janssen to collaborate on a longitudinal registry

**Leader:** P. Zandi

**Status/Notes:** On hold, per Janssen

- 
- **What have been the major challenges experienced by the team while working toward your goals?**
    - Time constraints and competing obligations remain persistent challenges.
  - **How can NNDC leadership & staff assist you in addressing any challenges faced by the task group/team?**
    - Help secure funding for an in-person meeting dedicated to framing the work needed to develop clinical consensus or best practice guidelines for ketamine treatment, including outlining/defining key topic areas and assigning initial responsibilities.
  - **What are some future goals for the task group/team? Please add specific possible projects and activities.**
    - Initiate and advance a project to develop clinical consensus guidelines and best practices for ketamine treatment, drawing on expert collaboration and systematic evidence reviews.
    - Submit a proposal to the Psychedelic Science Funders Collaborative (PSFC) for a Ketamine Training Program, building on the consensus guidelines.
    - Explore the development of a shared data registry across centers, with the goal of harmonizing data collection practices as part of that effort.
  - **Other comments**
    - The group is grateful for the ongoing support and coordination provided by NNDC staff.





## Advancing Scientific Discovery: NNDC Task Groups

### NEUROMODULATION



**Project:** Letter to the Editor on ECT, Journal of Affective Disorders

**Leader:** R. Weiner

**Status/Notes:** Completed – [Published in the Journal of Affective Disorders](#)

**Project:** ECT Cognition in Adolescents – Literature review

**Leader:** N. Ghaziuddin

**Status/Notes:** Ongoing – *This is a collaborative effort with the Child & Adolescent Mood Disorders Task Group*

**Project:** TMS Recommendations (*Momentum Grant funding*)

**Leader:** N. Trapp

**Status/Notes:** [Published in Clinical Neurophysiology](#)

**Project:** Baszucki + SAINT Foundation Grant / Bipolar depression TMS pilot study

**Leader:** P. Zandi

**Status/Notes:** Completed – [Published in the Journal of Affective Disorders](#)

**Project:** Bipolar depression TMS NIH grant application

**Leader:** J. Almeida

**Status/Notes:** Ongoing – Data from the Baszucki + SAINT Foundation pilot study is being used as preliminary data for an R61, R33 NIH grant that was led by J. Almeida (UT-Austin) in collaboration with NNDC sites Hopkins and Stanford.

**Project:** GenECT Project

**Leader:** P. Zandi

**Status/Notes:** Ongoing site and subject recruitment. The project is heading into the last year of recruitment. After that, efforts will be focused on analyzing the data from both the US initiative and global centers that have contributed.

- 
- **What have been the major challenges experienced by the team while working toward your goals?**
    - NNDC initiatives fall outside members' primary roles making it challenging to allocate sufficient time to these efforts.
    - Financial constraints have intensified due to reduced support from national funding agencies.
    - The lack of dedicated local research staff limits the time available to support and advance collaborative projects.
    - Finding meeting times that align with everyone's availability across various time zones remains a persistent challenge.
  - **How can NNDC leadership & staff assist you in addressing any challenges faced by the task group/team?**
    - Obtaining project funding is often difficult; guidance and support in this area would be valuable.
    - Convene periodic meetings of the Neuromodulation Task Group chairs to assess ongoing work and explore potential new projects.
  - **What are some future goals for the task group/team? Please add specific possible projects and activities.**
    - Awareness of advocacy issues is becoming increasingly vital, and there may be value in taking a more active role in addressing them.
    - Explore strategies to enhance the NNDC website as a valuable public resource, providing information on various neuromodulation treatments and addressing the stigma surrounding them. This may include developing educational content, position statements, curating relevant resources and articles, and incorporating multimedia elements like videos and expert interviews.

## Advancing Scientific Discovery: NNDC Task Groups

### PSYCHEDELICS & RELATED COMPOUNDS



**Project:** Considerations and Cautions for the Integration of Psilocybin into Routine Clinical Care: A Consensus Statement of the National Network of Depression Centers Psychedelics Task Group

**Leader:** F. Barrett

**Status/Notes:** Completed — Exploring publication venues for the manuscript

**Project:** Paper on the relevance of prior psychedelic experiences for therapists

**Leaders:** A. Wilton, G. Fonzo

**Status/Notes:** Ongoing

- 
- **What have been the major challenges experienced by the team while working toward your goals?**
    - Time constraints remain a significant challenge.
    - Awaiting progress in the field is another key challenge. While several large clinical trials are underway and their results are expected to advance the field, progress is currently limited. In the meantime, the group is working to identify and explore key theoretical and propositional questions, gather expert insights, and highlight priority areas for further investigation.
  - **How can NNDC leadership & staff assist you in addressing any challenges faced by the task group/team?**
    - Help identify funding opportunities for a multi-site clinical trial, once the group is ready to move forward (see *Other comments* section below).
  - **What are some future goals for the task group/team? Please add specific possible projects and activities.**
    - Create a paper exploring how to address expectations, which may generate illustrative examples and spark ideas for a potential follow-up project.
    - Complete work on the paper about how important it is for a therapist to have personal experience with psychedelics.
    - Form a Work Group to explore potential pathways for developing multi-site clinical trials (see *Other comments* section below).
  - **Other comments**
    - Consider how to establish the foundation for future clinical trials or a clinical trial network. To achieve larger sample sizes, more rigorous methodologies, and more generalizable outcomes, multi-site trials are essential. By putting the necessary infrastructure in place now, we can be ready to act swiftly when opportunities arise.



## Advancing Scientific Discovery: NNDC Task Groups

### SUICIDE PREVENTION



**Project:** Suicide in Bipolar Disorder: A Review of Three Stress-Related Systems

**Leaders:** M. Gaine, B. Coryell

**Status/Notes:** Ongoing

**Project:** Study regarding risk factors that move someone from suicidal ideation to attempt

**Leaders:** M. Gaine, E. Monson

**Status/Notes:** Paused — Awaiting the enhanced Mood Outcomes Program data, which will include Electronic Health Records information

**Project:** AHRQ – collaborative grant with EPIC to evaluate Saving Lives Toolkit

**Leader:** H. Wilcox

**Status:** Stopped — The AHRQ (Agency for Healthcare, Research and Quality) is under reorganization by the Federal Government

- 
- **What have been the major challenges experienced by the team while working toward your goals?**
    - Expanding involvement – It would be exciting to have more task group members actively contributing.
  - **How can NNDC leadership & staff assist you in addressing any challenges faced by the task group/team?**
    - Draft standardized messaging for an outreach email that active task group members can send to tenure-track faculty within their departments to gauge interest in participation.
    - Create a directory of task group members that includes their specific areas of interest; ideally, this directory would span all groups to support cross-group collaboration and help connect members with similar interests.
  - **What are some future goals for the task group/team? Please add specific possible projects and activities.**
    - Complete the review manuscript on suicide in bipolar disorder and submit it for publication.
    - Focus on expanding group membership and encouraging greater individual participation.



## Advancing Scientific Discovery: NNDC Task Groups

### TREATMENT-RESISTANT DEPRESSION



**Project:** Developing a TRD Consultation Program - Logistical and practical considerations (*Momentum Grant funding*)

**Leaders:** V. Voytenko, S. Conroy, J. Fournier

**Status/Notes:** Completed – [Published in the Journal of Clinical Psychiatry](#)

**Project:** Developing a TRD Consultation Program - What an assessment would look like (*Momentum Grant funding*)

**Leaders:** V. Voytenko, S. Conroy, J. Fournier

**Status/Notes:** Completed – [Published in the Journal of Clinical Psychiatry](#)

**Project:** JAD Manuscript – DATA: A consensus proposal for a new tracking system in treatment-resistant depression

**Leader:** P. Riva Posse

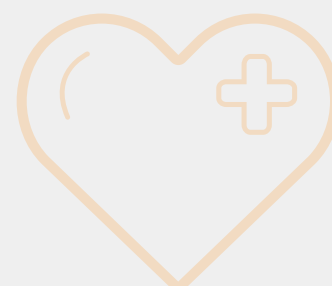
**Status:** Ongoing

**Project:** Manuscript - TRD update and treatment options

**Leader:** B. Bobo

**Status:** Ongoing

- 
- **What have been the major challenges experienced by the team while working toward your goals?**
    - Ensuring all team members stay aligned on projects while navigating conflicting schedules remains a continual challenge.
  - **How can NNDC leadership & staff assist you in addressing any challenges faced by the task group/team?**
    - Help identify a meeting time that works for a broader group of participants.
    - Support efforts to recruit new members.
    - Coordinate TRD Task Group co-chair meetings to evaluate project progress and direct focus toward new initiatives and topics.
  - **What are some future goals for the task group/team? Please add specific possible projects and activities.**
    - Complete the two manuscripts that are outstanding:
      - JAD Manuscript – DATA: A consensus proposal for a new tracking system in treatment-resistant depression
      - JAD Manuscript – Overall treatment review
    - Study application of the TRD Clinic Consensus Recommendations developed by the task group and published in the Journal of Clinical Psychiatry (*Developing a TRD Consultation Program – Logistical and practical considerations in setting up a consultation clinic + What an assessment in a TRD consultation clinic would look like*) by conducting a pilot study to collect data from several NNDC member sites. Then use that study to inform a subsequent grant proposal.



## Advancing Scientific Discovery: NNDC Task Groups

### WOMEN & MOOD DISORDERS



**Project:** Momentum Grant application: Support for a biostatistician and a research assistant for an NIH grant application focusing on the role of the HPA axis and adversity / disparities in depression across the female lifespan (*Momentum Grant funding*)

**Leaders:** L. Hantsoo, A. Ozerdem, M. Gaine

**Status/Notes:** Completed — Momentum Grant awarded; NIH Grant application in process

**Project:** NNDC Annual Conference Poster presentation - Role of the HPA axis and adversity / disparities in depression across the female reproductive lifecycle (*Momentum Grant funding*)

**Leaders:** L. Hantsoo, R. Baweja

**Status:** Completed

**Project:** NIH R21 grant application to explore the genetic mechanisms of the HPA axis in women with depression

**Leader:** M. Gaine

**Status:** Ongoing

**Project:** NNDC Annual Conference Poster presentation - Disparities in care focused on racial and ethnic groups, and insurance coverage (*Momentum Grant funding*)

**Leader:** R. Ammerman

**Status:** Completed

**Project:** NNDC Annual Conference - Symposium on Diversity and Equity: Women's Mental Health (*Momentum Grant funding*)

**Leader:** S. Weiss

**Status/Notes:** Completed — Presented on the HPA axis review as one of the segments of the three-part symposium

**Project:** NNDC Annual Conference — Symposium on Diversity and Equity: Women's Mental Health (*Momentum Grant funding*)

**Leader:** R. Ammerman

**Status/Notes:** Completed — Presented on disparities in care focused on racial and ethnic groups, and insurance coverage as one of the segments of the three-part symposium

**Project:** Manuscript on disparities in care focused on differences among racial and ethnic groups, and insurance coverage (*Momentum Grant funding*)

**Leaders:** R. Ammerman, S. Weiss

**Status/Notes:** Ongoing — Submitted to the Journal of Clinical Psychiatry

**Project:** Collaborative support for PCORI grant project led by Dr. Sharma, assistant professor at Mayo Health Clinic - Building WomenWise: Empowering Women Through Capacity Building for Patient-Centered Research on Alcohol Use

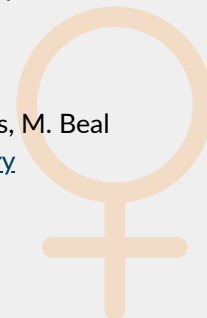
**Leader:** S. Kornfield, serving on the Community Advisory Board for the project as the NNDC representative

**Status:** Ongoing

**Project:** Targeted Research & Treatment Implications in Women with Depression

**Leaders:** A. Ozerdem, M. Gaine, R. Baweja, B. Bobo, K. Jagodnik, E. McGlade, S. Dekel, S. Weiss, M. Beal

**Status/Notes:** Completed — [Published in FOCUS: The Journal of Lifelong Learning in Psychiatry](#)



## Advancing Scientific Discovery: NNDC Task Groups

### WOMEN & MOOD DISORDERS, CONT.



**Project:** Mood Outcomes Data Analysis to Identify Gender-Specific Symptom Profiles

**Leader:** S. Weiss

**Progress:** Ongoing — Targeting the Journal of Affective Disorders

**Project:** Manuscript around better understanding risk factors for dying by suicide in women

**Leader:** E. Diblasi

**Progress:** Ongoing

**Project:** Trauma Work Group formed

**Leader:** K. Jagodnik

**Progress:** Ongoing — Group is working on a project to elucidate post-traumatic growth and resilience

- 
- **What have been the major challenges experienced by the team while working toward your goals?**
    - It's hard to prioritize this important work alongside everyday work pressures/responsibilities.
    - The group faced a challenge when exploring resources for research; it was difficult and time consuming to identify who had the data they needed to analyze/explore.
  - **How can NNDC leadership & staff assist you in addressing any challenges faced by the task group/team?**
    - Develop an archive with information about databases showing who has what types of data.
    - Speed up inclusion of biomarkers in the data the NNDC is collecting.
  - **What are some future goals for the task group/team? Please add specific possible projects and activities.**
    - Wrap up manuscripts that are in process.
    - Figure out a way to better involve trainees in group activities. Trainees typically have less control over their schedules, making it more challenging for them to attend meetings. As we're thinking about projects, maybe reach out specifically to brainstorm ways to include them, perhaps asynchronously.
  - **Other comments**
    - A key motivation for working on NNDC projects is the synergistic impact. Things we cannot do with our existing institutions and collaborators are made possible through our NNDC connections.
    - Looking ahead, members of the group face anxiety about the future of research funding. Some projects and research areas (i.e., sex differences and DEI studies) will likely be more impacted than others.
    - The group appreciates the support they receive from the NNDC staff.

