



NATIONAL NETWORK *of* DEPRESSION CENTERS

MOOD DISORDER CHALLENGES:
EMERGING SYSTEMS AND INDIVIDUAL SOLUTIONS

OCTOBER 12-13, 2023

InterContinental Houston
Houston, Texas

15th
ANNUAL
2023
CONFERENCE



WELCOME TO THE NNDC 2023 ANNUAL CONFERENCE!

The conference theme this year — Mood Disorder Challenges: Emerging Systems and Individual Solutions — was chosen to highlight the latest and greatest advances in mood disorders research and care delivery. The conference features exciting speakers and riveting topics ranging from improving access to care to digital therapeutics to novel medications, together with many research posters, in an intimate conference designed to foster networking between researchers and clinicians from leading universities from across the country.

We are honored to welcome Dr. Michael Thase as our plenary speaker this year — a Distinguished Fellow of the American Psychiatric Association, a Founding Fellow of the Academy of Cognitive Therapy, an elected member of the American College of Psychiatrists and American College of Neuropsychopharmacology, and board member of many distinguished societies. Dr. Thase's work focuses on the assessment and treatment of mood disorders, including studies of the differential therapeutics of both depression and bipolar affective disorder. In his plenary talk, titled "Novel and Emerging Antidepressant Medications", Dr. Thase will articulate the major unmet needs in the pharmacotherapy of depression, which serve as potential targets for novel medication development.

We are also pleased about the joint effort this year with the UTHealth Houston 2023 Mood Disorders Conference held the following day on Saturday, October 14th highlighting notable speakers from leading NNDC member sites, including a plenary talk about the latest depression guidelines, several sessions on depression across the lifespan, and 3 presentations on ketamine, TMS, and psychotherapy for treatment resistant depression.

As it is every year, the NNDC 2023 Annual Conference is the perfect time to start thinking about how you can get more involved with the NNDC. We would love to discuss how your center's experts and areas of interest might fit into the work our Task Groups are doing. Thank you for joining us, as always.



Sagar Parikh, MD, FRCPC
Medical Director, NNDC



Mark Frye, MD
President, NNDC Board of Directors

FROM THE NNDC TEAM

On behalf of the whole NNDC Team, we are pleased to welcome you to Houston for our 15th Annual Conference! Each year the conference program highlights the ways the NNDC is uniquely positioned to improve diagnosis and treatment of mood disorders by facilitating knowledge sharing across the nation and expediting large scale, multi-site research initiatives – and this year's program is no exception. Our members are engaging in some of the most innovative and exciting research in the field, and the Annual Conference is a great way to show off some of that work, whether through main stage presentations, poster session discussions, or even casual conversation with your fellow attendees over the duration of the program.

Thank you for joining us! We hope to see you again next year – we will be posting further updates on the website, social media, and in the newsletter once plans are confirmed. Stay tuned!



Mike Flood
Co-Executive Director, NNDC



Rob Vallentine
Co-Executive Director, NNDC

TABLE OF CONTENTS

4	Sponsors
5	Acknowledgements
6	NNDC Board of Directors
7	NNDC Team
8	About the NNDC
9	Education Statement
10	Thursday Schedule
11	Friday Agenda At-a-Glance
12	InterContinental Houston Floor Plan
13	Friday Sessions - October 13, 2023
16	Speakers
17	Speaker Bios
20	Posters
23	Travel Award Recipients
24	UTHealth Houston 2023 Mood Disorders Conference
25	Houston Visitor Information

For your convenience, blank pages for notes are included at the back of this booklet.



THANK YOU

to all of our sponsors for your support of
the NNDC 15th Annual Conference!

GOLD LEVEL SPONSORS



BRONZE LEVEL SPONSORS



ACKNOWLEDGEMENTS

We would like to thank all of our speakers and facilitators for their contributions both to this conference and their areas of study. We are proud to work with such highly respected and knowledgeable clinicians, researchers, and advocates and hope to continue developing these and other relationships with some of the world's brightest minds.

We would also like to thank the NNDC Conference Program Committee for putting together another engaging and innovative annual conference program.

CONFERENCE PROGRAM COMMITTEE

■ Program Committee Chair
Sagar Parikh, MD, FRCPC
University of Michigan

■ **Laura Cabrera, PhD**
Penn State University

■ **Leslie Miller, MD**
Johns Hopkins Medicine

■ **Heather Flynn, PhD**
Florida State University

■ **Nicholas Trapp, MD**
University of Iowa

■ **Erin McGlade, PhD**
University of Utah

■ **Jennifer Vande Voort, MD**
Mayo Clinic

Stay tuned for details about the NNDC 2024 Annual Conference next year in **Salt Lake City, Utah** with co-host **University of Utah**!

SALT LAKE CITY, UTAH

F 2
A 0
L 2
L 4



NATIONAL NETWORK of
DEPRESSION CENTERS



HUNTSMAN
MENTAL HEALTH INSTITUTE
UNIVERSITY OF UTAH

NNDC BOARD OF DIRECTORS

EXECUTIVE COMMITTEE OF THE BOARD

Mark Frye, MD (President) • Mayo Clinic
Jair C. Soares, MD, PhD (Vice President) • University of Texas Health Science Center at Houston
Stephen Strakowski, MD (Treasurer) • Indiana University
Melissa DelBello, MD, MS (Secretary) • University of Cincinnati & Lindner Center of HOPE
John F. Greden, MD (Founding Chair) • University of Michigan Eisenberg Family Depression Center
J. Raymond DePaulo, Jr, MD (Immediate Past President) • The Johns Hopkins Mood Disorders Center
Olusola Ajilore, MD, PhD (Member-at-Large) • University of Illinois at Chicago
C. Neill Epperson, MD (Member-at-Large) • University of Colorado Anschutz Medical Campus
Faith Gunning, PhD (Member-at-Large) • Weill Cornell Medicine

EX OFFICIO BOARD MEMBERS

Stuart Charney, RPH, JD (Board Advisor) • NNDC Advisory Council
Frank DeGruy, MD, MSFM (Board Advisor) • University of Colorado Anschutz Medical Campus

BOARD MEMBERS

Caleb Adler, MD • University of Cincinnati & Lindner Center of HOPE
Jorge Almeida, MD, PhD • University of Texas Austin & The Center for Youth Mental Health
Katherine Burdick, PhD • Brigham & Women's Hospital, Partners HealthCare - Harvard Medical School
Regina Bussing, MD • University of Florida
David Casey, MD • University of Louisville
Susan K. Conroy, MD, PhD • Indiana University
William Coryell, MD • University of Iowa
Mario Cristancho, MD • University of Pennsylvania
Joao de Quevedo, MD, PhD • University of Texas at Houston, McGovern Medical School
Marc Dubin, MD, PhD • Weill Cornell Medical College
Jay Fournier, PhD • The Ohio State University
Fernando Goes, MD • Johns Hopkins Medicine
Adriana Hermida, MD • Emory University
Richard Holbert, MD • University of Florida
Kay Redfield Jamison, PhD • Johns Hopkins University Mood Disorders Center
Anand Kumar, MD, MHA • University of Illinois at Chicago
Brian Mickey, MD, PhD • University of Utah Huntsman Mental Health Institute
Jeffrey Newport, MD, MS • University of Texas Austin & The Center for Youth Mental Health
Sagar Parikh, MD, FRCPC • University of Michigan Eisenberg Family Depression Center
K. Luan Phan, MD • The Ohio State University
Mark Rapaport, MD • University of Utah Huntsman Mental Health Institute
Natalie L. Rasgon, MD, PhD • Stanford University
Scott L. Rauch, MD • McLean Hospital, Partners HealthCare - Harvard Medical School
Patricio Riva Posse, MD • Emory University
Moirá Rynn, MD • Duke University
Alan F. Schatzberg, MD • Stanford University
Christopher Schneck, MD • University of Colorado Anschutz Medical Campus
Michael Thase, MD • University of Pennsylvania
Carolyn Turvey, PhD • University of Iowa
Jennifer L. Vande Voort, MD • Mayo Clinic
Richard Weiner, MD, PhD • Duke University
Jesse H. Wright, MD, PhD • University of Louisville Depression Center

ASSOCIATE MEMBER LEADERSHIP

Eric Achtyes, MD • Michigan State University
Heather Flynn, PhD • Florida State University
Louis Nykamp, MD • Pine Rest Christian Mental Health Services
Erika Saunders, MD • Penn State Milton S. Hershey Medical Center



Mike Flood

Co-Executive Director
mjflood@nndc.org



Rob Vallentine

Co-Executive Director
rvallentine@nndc.org



Diana Burnett, MS

Program Manager
dburnett@nndc.org



Mary Laffey

Program Manager
mlaffey@nndc.org



Brad Hovermale

Operations Manager
bhovermale@nndc.org



Shilpa Kharecha

Events & Communications Manager
skharecha@nndc.org

ABOUT THE NNDC

MISSION

REDUCE SUFFERING FROM DEPRESSION THROUGH THE POWER OF OUR NETWORK

The National Network of Depression Centers (NNDC) was established in 2008 to mobilize collaborative expertise to counteract the public health crises of depressions, bipolar illnesses, and other mood disorders. The NNDC is a nonprofit network of academic medical centers dedicated to improving the lives of those affected by depression and related mood disorders. We are working to change the national conversation surrounding these illnesses through large-scale collaborative studies, education, and outreach.

PRIORITIES

1



Promote measurement-based care including standardized protocols for screening, diagnosis, and treatment

2



Coordinate large-scale, longitudinal, collaborative research to advance understanding of mood disorders

3



Disseminate best practices and new treatment approaches, educating the next generation of clinicians

MEMBERS

COLLABORATING TO LIFT THE BURDEN OF MOOD DISORDERS

The National Network of Depression Centers is comprised of major academic medical centers from around the country. By uniting our Centers of Excellence and our Associate Members in a collaborative network, the strongest players in the field grow stronger. The NNDC combines unparalleled expertise and fully leverages available resources, to advance state-of-the-science in the field of mood disorders.

CENTERS OF EXCELLENCE

- Brigham & Women's Hospital - Harvard Medical School
- Duke University
- Emory University
- Indiana University
- Johns Hopkins University
- Mayo Clinic
- McLean Hospital - Harvard Medical School
- The Ohio State University
- Stanford University
- University of Cincinnati & Lindner Center of HOPE
- University of Colorado Anschutz Medical Campus
- University of Florida
- University of Illinois at Chicago
- University of Iowa
- University of Louisville
- University of Michigan
- University of Pennsylvania
- The University of Texas at Austin
- The University of Texas Health Science Center at Houston
- University of Utah
- Weill Cornell Medicine

ASSOCIATE MEMBERS

- Florida State University
- Michigan State University & Pine Rest Christian Mental Health Services
- Pennsylvania State University
- University of North Carolina at Chapel Hill

TASK GROUPS

WORKING TOGETHER TO ADVANCE SCIENTIFIC KNOWLEDGE

NNDC Task Groups generate the forward momentum needed to make a difference in the diagnosis, treatment, and prevention of depressive illnesses. Within our Network, the best minds in the field come together to take advantage of these platforms for unprecedented scientific collaboration and, ultimately, to address the most pressing mental health challenges. NNDC Task Groups are organized around specific sub-specialties related to the diagnosis, treatment, and prevention of depressive illnesses, including:

- Biomarkers Task Group
 - Bipolar Disorders Task Group
 - Child & Adolescent Mood Disorders Task Group
 - College Mental Health Task Group
 - Geriatric Mood Disorders Task Group
 - Ketamine Task Group
 - Neuromodulation Task Group
 - Psychedelics & Related Compounds Task Group
 - Suicide Prevention Task Group
 - Treatment Resistant Depression Task Group
 - Women & Mood Disorders Task Group
- IN DEVELOPMENT:**
- Digital Health
 - Integrated Depression Care
 - Substance Use Disorders/Comorbidities
 - Workplace and Community Education

MOOD OUTCOMES PROGRAM

MEASUREMENT-BASED CARE MEETS NATIONAL DATABASE

The NNDC Mood Outcomes Program seeks to improve care provided to those suffering from mood disorders. Though the use of measurement-based care tools and quality improvement programs informed by patient care data at our centers, the NNDC is working to transform the treatment of mood disorders. Mood Outcomes Program features:

- Three Mental Health Vital Signs
 - to monitor patient progress
- Clinical Support Tools
 - for customized patient treatment
- Aggregate Data Reporting
 - for clinic-wide care strategies

EDUCATION STATEMENT

SATISFACTORY COMPLETION

Learners must complete an evaluation form to receive a certificate of completion. Your chosen sessions must be attended in their entirety. Partial credit of individual sessions is not available. If you are seeking continuing education credit for a specialty not listed below, it is your responsibility to contact your licensing/certification board to determine course eligibility for your licensing/certification requirement.



PHYSICIANS

In support of improving patient care, this activity has been planned and implemented by Amedco LLC and National Network of Depression Centers. Amedco LLC is jointly accredited by the Accreditation Council for Continuing Medical Education (ACCME), the Accreditation Council for Pharmacy Education (ACPE), and the American Nurses Credentialing Center (ANCC), to provide continuing education for the healthcare team. Amedco Joint Accreditation #4008163.

Credit Designation Statement – Amedco LLC designates this live activity for a maximum of 7.75 AMA PRA Category 1 Credits™. Physicians should claim only the credit commensurate with the extent of their participation in the activity.



PSYCHOLOGISTS

This course is co-sponsored by Amedco and National Network of Depression Centers. Amedco is approved by the American Psychological Association to sponsor continuing education for psychologists. Amedco maintains responsibility for this program and its content. 7.75 hours.

- The following state boards accept courses from APA providers for Counselors: AK, AR, AZ, CA, CO, CT, DC, DE, FL, GA, HI, IA, ID, IL, IN, KS, KY, MD, ME, MO, NC, ND, NH, NE, NJ, NM, NV, OK*, OR, PA, RI, SC, SD, TN, TX, UT, VA, WI, WY
- MI: No CE requirements
- *OK: Accepts APA credit for live, in-person activities but not for ethics and/or online courses.
- The following state boards accept courses from APA providers for MFTs: AK, AR, AZ, CA, CO, CT, DE, FL, GA, IA, ID, IN, KS, MD, ME, MO, NE, NC, NH, NJ, NM, NV, OK*, OR, PA, RI, SC, SD, TN, TX, UT, VA, WA, WI, WY
- AL MFTs: Credits authorized by NBCC or any other state licensing agency will be accepted.
- MA MFTs: Participants can self-submit courses not approved by the MAMFT board for review.
- The following state boards accept courses from APA providers for Addictions Professionals: AK, AR, CO, CT, DC, DE, GA, IA, IN, KS, LA, MD, MO, MT, NC, ND, NE, NJ, NM, NY (held outside NY only), OK*, OR, SC, UT, WA, WI, WY
- The following state boards accept courses from APA providers for Social Workers: AK, AR, AZ, CA, CO, DE, FL, GA, ID, IN, KY, ME, MN, MO, NE, NH, NM, OR, PA, VT, WI, WY



SOCIAL WORKERS

As a Jointly Accredited Organization, Amedco is approved to offer social work continuing education by the Association of Social Work Boards (ASWB) Approved Continuing Education (ACE) program. Organizations, not individual courses, are approved under this program. State and provincial regulatory

boards have the final authority to determine whether an individual course may be accepted for continuing education credit. Amedco maintains responsibility for this course. ASWB Learner Level: Intermediate/Advanced. Social Workers completing this course receive 7.75 GENERAL continuing education credits.

- The following state boards accept courses from ASWB ACE credit for Social Workers: AK, AL, AR, AZ, CA, CO, CT, DC, DE, FL, GA, HI, ID, IL, IN, IA, KS, KY, LA, ME, MD, MA, MI, MN, MS, MO, MT, NC, ND, NE, NH, NM, NV, OH, OK*, OR, PA, RI, SC, SD, TN, TX, UT, VT, VA, WA, WI, WV*, WY
- *OK: Accepts ASWB ACE for live, in-person activities but not for ethics and/or online courses.
- *WV: Accepts ASWB ACE unless activity is held live in West Virginia.
- The following state boards accept courses offering ASWB ACE credit for Counselors: AK, AR, AZ, CA, CO, CT, DC, FL, GA, IA, ID, IL, IN, KS, MA, MD, ME, MO, ND, NE, NH, NM, NV, OK*, OR, PA, TN, TX, UT, VA, WI, WY
- *MI: No CE requirement.
- The following state boards accept courses offering ASWB ACE credit for MFTs: AK, AR, AZ, CA, CO, FL, IA, ID, IN, KS, MD, ME, MO, NC, NE, NH, NM, NV, OK*, OR, PA, RI, TN, TX, UT, VA, WI, WY
- AL MFTs: Credits authorized by NBCC or any other state licensing agency will be accepted.
- MA MFTs: Participants can self-submit courses not approved by the MAMFT board for review.
- MI: No CE requirement.
- The following state boards accept ASWB ACE credit for Addiction Professionals: AK, CA, CO, CT, GA, IA, IN, KS, LA, MO, MT, ND, NM, NV, OK, OR, SC, WA, WI, WV, WY

TO CLAIM YOUR CREDITS

1. Go to <http://nndc.cmecertificateonline.com>
2. Select "NNDc 2023 Annual Conference"
3. Complete the evaluation
3. Print all pages of the certificate for your records

QUESTIONS? Contact Amedco at Certificate@AmedcoEmail.com

THURSDAY SCHEDULE

Thursday, October 12, 2023

11:00am CT — Registration/Check-in Begins Live Oak Pre-Function

12:00-3:00pm CT (3-hour meetings)

Workgroup Meetings	Location
--------------------	----------

Bipolar Clinics Workgroup	Red Maple
---------------------------	-----------

Ketamine AND Psychedelics & Related Compounds Combined Workgroup	Winged Elm
--	------------

Neuromodulation Consensus Recommendations Workgroup (Momentum Grant Team)	Magnolia & Magnolia Foyer
---	---------------------------

TRD (Treatment Resistant Depression) Consultation Clinics Workgroup	Cedar A
---	---------

Women & Mood Disorders Biological Mechanisms Workgroup	Cedar B
--	---------

3:00-4:00pm CT (1-hour meetings)

Task Group Meetings	Location
---------------------	----------

Bipolar Disorders Task Group	Red Maple
------------------------------	-----------

Ketamine AND Psychedelics & Related Compounds Combined Task Group	Winged Elm
---	------------

Treatment Resistant Depression Task Group	Cedar A
---	---------

Women & Mood Disorders Task Group	Cedar B
-----------------------------------	---------

4:00-5:00pm CT (1-hour meetings)

Task Group Meetings	Location
---------------------	----------

Biomarkers Task Group	Red Maple
-----------------------	-----------

Child & Adolescent Mood Disorders Task Group	Winged Elm
--	------------

College Mental Health Task Group	Magnolia
----------------------------------	----------

Integrated Depression Care Proposed Task Group	Cedar A
--	---------

Workplace and Community Education Proposed Task Group	Cedar B
---	---------

5:00-6:00pm CT (1-hour meetings)

Meetings	Location
----------	----------

Digital Health Proposed Task Group	Red Maple
------------------------------------	-----------

Neuromodulation Task Group	Magnolia
----------------------------	----------

Substance Use Disorders/Comorbidities Proposed Task Group	Winged Elm
---	------------

6:00-8:00pm CT (2-hour reception)

Event	Location
-------	----------

NNDC Reception (open to all conference attendees)	Live Oak Pre-Function & Magnolia Foyer
---	--

* Note: meetings and room locations are subject to change

FRIDAY AGENDA AT-A-GLANCE

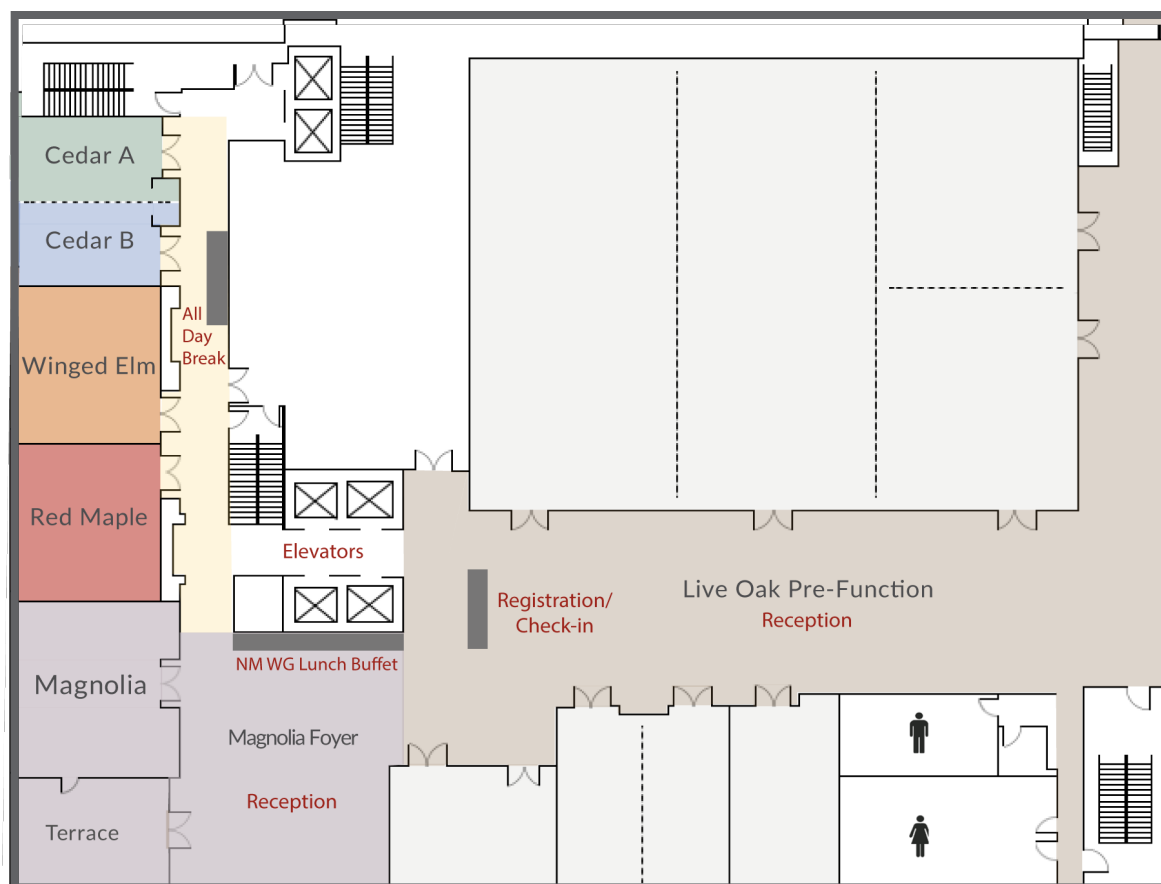
Mood Disorder Challenges: Emerging Systems and Individual Solutions

Friday, October 13, 2023

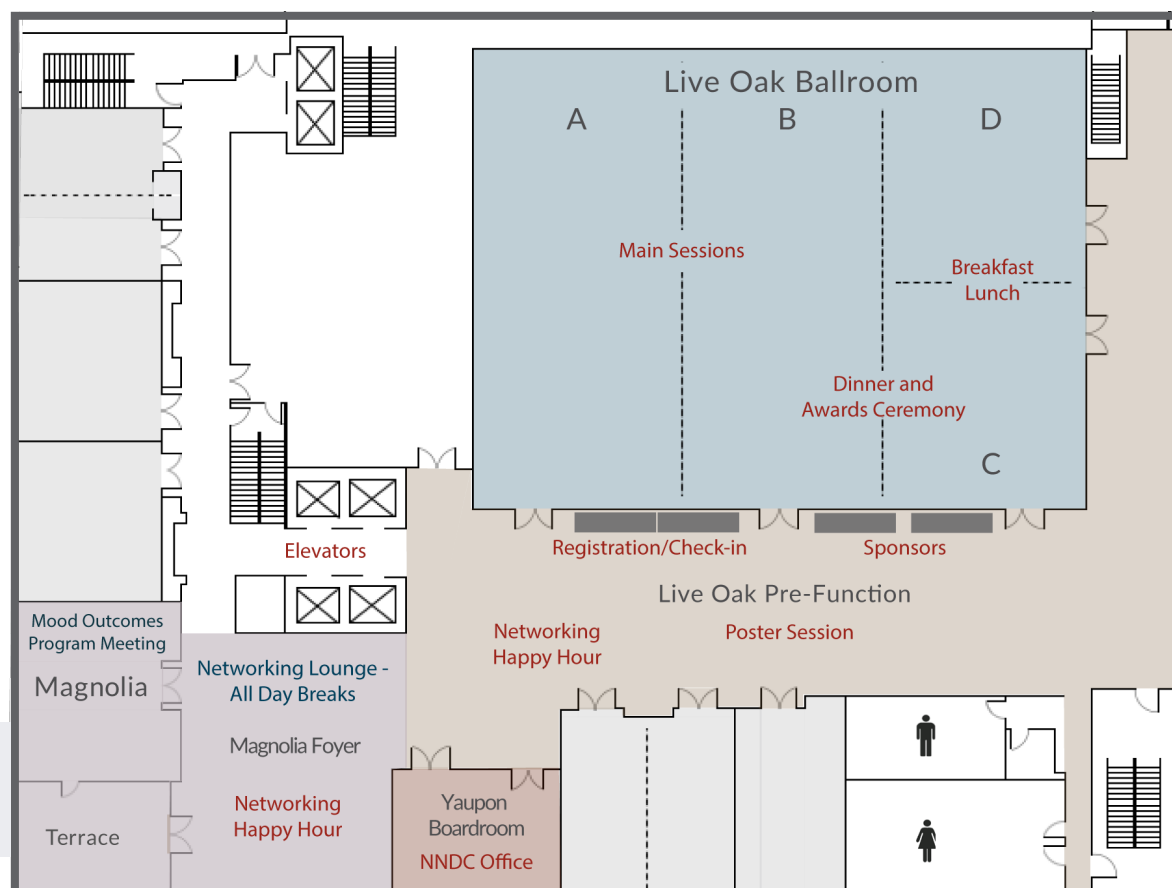
Time (CT)	Title and Speaker	Location
7:30-8:30am	<i>Registration/Check-in/Breakfast</i>	Live Oak Pre-Function & Ballroom C & D
7:30-8:30am	Mood Outcomes Program Meeting	Magnolia
8:30-9:00am	Welcome Address and NNDC Administrative Updates	Live Oak Ballroom A & B
Symposium: Improving Access for Children		
9:00-9:30am	We Will Board You Now: Keeping Kids in Crisis in the ER (25 min talk, 5 min Q&A) Elizabeth K. Reynolds, PhD, Johns Hopkins Medicine	Live Oak Ballroom A & B
9:30-10:00am	MC3 and Mi: Accessing Child Psychiatry Across an Entire State (25 min talk, 5 min Q&A) Joanna Quigley, MD, University of Michigan	Live Oak Ballroom A & B
10:00-10:30am	Solutions: Panel Discussion with Audience Feedback Session Chair: Heather Flynn, PhD, Florida State University Moderator: Sagar V. Parikh, MD, FRCPC, University of Michigan	Live Oak Ballroom A & B
10:30-11:00am	<i>Morning Break</i>	Magnolia Foyer
Plenary Talk		
11:00am-12:00pm	Novel and Emerging Antidepressant Medications (45 min talk, 15 min Q&A) Michael E. Thase, MD, University of Pennsylvania	Live Oak Ballroom A & B
12:00-12:45pm	<i>Lunch</i>	Live Oak Ballroom C & D
12:45-2:00pm	<i>Poster Session</i>	Live Oak Pre-Function
Mini Symposia 1: Non-Traditional Treatments		
2:00-2:30pm	Optimizing TMS for Psychiatry: Targeting, Mechanisms, and Beyond (25 min talk, 5 min Q&A) Nicholas T. Trapp, MD, MS, University of Iowa	Live Oak Ballroom A & B
2:30-3:00pm	The Promise and Perils of Psychedelic-Assisted Therapy (25 min talk, 5 min Q&A) Benjamin R. Lewis, MD, University of Utah	Live Oak Ballroom A & B
3:00-3:30pm	<i>Afternoon Break</i>	Magnolia Foyer
Mini Symposia 2: Technology and Depression		
3:30-4:00pm	Internet CBT: The Computer Will See You Now (25 min talk, 5 min Q&A) Isabelle Rosso, PhD, McLean Hospital - Harvard Medical School	Live Oak Ballroom A & B
4:00-4:30pm	Digital Mental Health Interventions: Promoting or Diminishing Health Equity? (25 min talk, 5 min Q&A) Rebecca Feinstein MPH, MSW, PhD, University of Illinois at Chicago	Live Oak Ballroom A & B
Hot Topics		
4:30-4:50pm	Precision Psychiatry: Imaging Neuroimmune Markers in Major Depression (15 min talk, 5 min Q&A) Jennifer M. Coughlin, MD, Johns Hopkins Medicine	Live Oak Ballroom A & B
4:50-5:10pm	College Mental Health: Putting the Oxygen Mask on First for Faculty and Staff (15 min talk, 5 min Q&A) Michelle B. Riba, MD, MS, University of Michigan	Live Oak Ballroom A & B
5:10-5:30pm	Developing a Potential New Treatment Alternative for TRD Patients: Psilocybin Assisted Therapy (15 min talk, 5 min Q&A) Jair C. Soares, MD, PhD, UTHHealth Houston	Live Oak Ballroom A & B
5:30-6:30pm	<i>Networking Happy Hour</i>	Live Oak Pre-Function & Magnolia Foyer
6:30-8:30pm	<i>Dinner and Awards Ceremony</i>	Live Oak Ballroom B, C, D

INTERCONTINENTAL HOUSTON FLOOR PLAN, 7TH FLOOR

THURSDAY
October 12, 2023
NNDC Meetings



FRIDAY
October 13, 2023
Main Sessions



WIFI
Username: IHG One Rewards
Password: HOUIT

FRIDAY SESSIONS - OCTOBER 13, 2023

7:30-8:30am Registration/Check-In/Breakfast

8:30-9:00am Welcome Address and NNDC Administrative Updates

9:00-10:30am Symposium: Improving Access for Children

■ 9:00-9:30am

WE WILL BOARD YOU NOW: KEEPING KIDS IN CRISIS IN THE ER

Elizabeth K. Reynolds, PhD, Johns Hopkins University

Learning Objectives:

1. Understand the current status of youth mental health and need for timely access to care.
2. Describe the pediatric psychiatry ER boarding crisis.
3. Consider solutions to the access and resource problems in child mental health.

■ 9:30-10:00am

MC3 AND MI: ACCESSING CHILD PSYCHIATRY ACROSS AN ENTIRE STATE

Joanna Quigley, MD, University of Michigan

Learning Objectives:

1. Discuss the demands on access for child and adolescent psychiatric expertise both nationally, and locally.
2. Review the history and implementation of the MC3 statewide access program.
3. Review data from this program and discuss opportunities for improving access to care, and having greater impacts at the local level.

■ 10:00-10:30am

SOLUTIONS: PANEL DISCUSSION WITH AUDIENCE FEEDBACK

Moderator: Sagar V. Parikh, MD, FRCPC, University of Michigan

Session Chair: Heather Flynn, PhD, Florida State University

Learning Objectives:

1. Identify challenges in pediatric psychiatry access.
2. Clarify Michigan approach to child psychiatry outreach.
3. Identify broad systems solutions to access issues.

10:30-11:00am Break

11:00am-12:00pm Plenary Talk

■ **NOVEL AND EMERGING ANTIDEPRESSANT MEDICATIONS**

Michael E. Thase, MD, University of Pennsylvania

Learning Objectives:

1. Articulate the major unmet needs in the pharmacotherapy of depression, which serve as potential targets for novel medication development.
2. Describe the discovery of the antidepressant effects of intravenous ketamine and subsequent efforts to develop other drugs that target glutamatergic neurotransmission.
3. Discuss the novel neurotransmitter effects of selected neurosteroid and their promise as antidepressants.
4. Summarize the state of the art of so called psychedelic compounds that have antidepressant effects, including important unresolved questions and potential challenges.

FRIDAY SESSIONS - OCTOBER 13, 2023

12:00-12:45pm Lunch

12:45-2:00pm Poster Session

2:00-3:00pm Mini-Symposia 1: Non-Traditional Treatments

■ **2:00-2:30pm**

OPTIMIZING TMS FOR PSYCHIATRY: TARGETING, MECHANISMS, AND BEYOND

Nicholas T. Trapp, MD, MS, University of Iowa

Learning Objectives:

1. Discuss current psychiatric indications of transcranial magnetic stimulation.
2. Explain the state of evidence for various TMS targeting methods for treating major depressive disorder.
3. Develop an understanding of new methods for exploring the mechanisms underlying repetitive TMS protocols.

■ **2:30-3:00pm**

THE PROMISE AND PERILS OF PSYCHEDELIC-ASSISTED THERAPY

Benjamin R. Lewis, MD, University of Utah

Learning Objectives:

1. Attendees will develop working knowledge of the current evidence base for psychedelic-assisted therapies.
2. Attendees will be introduced to some of the major challenges and limitations regarding studies with psychedelic compounds.
3. Attendees will develop working knowledge of some of the ethical issues presented by psychedelic-assisted therapies.

3:00-3:30pm Break

3:30-4:30pm Mini-Symposia 2: Technology and Depression

■ **3:30-4:00pm**

INTERNET CBT: THE COMPUTER WILL SEE YOU NOW

Isabelle Rosso, PhD, McLean Hospital - Harvard Medical School

Learning Objectives:

1. Learn about the translation of cognitive behavioral therapy to internet-based delivery.
2. Learn about the advantage of internet-based CBT.
3. Understand the current evidence-based for internet-based CBT's efficacy and effectiveness.

■ **4:00-4:30pm**

DIGITAL MENTAL HEALTH INTERVENTIONS: PROMOTING OR DIMINISHING HEALTH EQUITY?

Rebecca Feinstein, MPH, MSW, PhD, University of Illinois at Chicago

Learning Objectives:

1. Define health equity within the digital mental health intervention space.
2. Identify evidence-based models and frameworks to promote health equity.
3. Illustrate barriers and facilitators to implementing digital mental health interventions.

FRIDAY SESSIONS - OCTOBER 13, 2023

4:30-5:30pm Hot Topics

■ 4:30-4:50pm

PRECISION PSYCHIATRY: IMAGING NEUROIMMUNE MARKERS IN MAJOR DEPRESSION

Jennifer M. Coughlin, MD, Johns Hopkins University

Learning Objectives:

1. Share emerging imaging data that may forward our understanding of the role of microglia in Major Depressive Disorder.
2. Present recent imaging findings in the context of precision psychiatry strategies for care of individuals with Major Depressive Disorder.

■ 4:50-5:10pm

COLLEGE MENTAL HEALTH: PUTTING THE OXYGEN MASK ON FIRST FOR FACULTY AND STAFF

Michelle B. Riba, MD, MS, University of Michigan

Learning Objectives:

1. Provide a brief history and current issues in college mental health.
2. Review models of care.
3. Present the Michigan pilot training faculty and staff.

■ 5:10-5:30pm

DEVELOPING A POTENTIAL NEW TREATMENT ALTERNATIVE FOR TRD PATIENTS: PSILOCYBIN ASSISTED THERAPY

Jair C. Soares, MD, PhD, UTHealth Houston

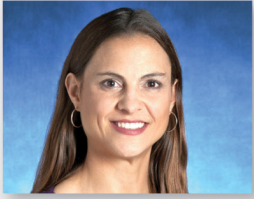
Learning Objectives:

1. Learn about recent research involving psychedelic drugs to treat major depression.
2. Review recent phase II studies of psilocybin in TRD.
3. Discuss new research avenues with psychedelic agents.

5:30-6:30pm Networking Happy Hour

6:30-8:30pm Dinner and Awards Ceremony

SPEAKERS



Jennifer M. Coughlin, MD
Johns Hopkins University



Rebecca Feinstein, MPH, MSW, PhD
University of Illinois at Chicago



Heather Flynn, PhD
Florida State University



Benjamin R. Lewis, MD
University of Utah



Sagar V. Parikh, MD, FRCPC
University of Michigan



Joanna Quigley, MD
University of Michigan



Elizabeth K. Reynolds, PhD
Johns Hopkins University



Michelle B. Riba, MD, MS
University of Michigan



Isabelle Rosso, PhD
McLean Hospital - Harvard Medical School



Jair C. Soares, MD, PhD
UTHealth Houston



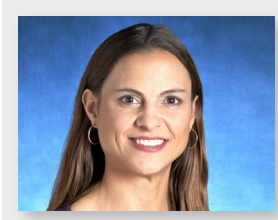
Michael E. Thase, MD
University of Pennsylvania



Nicholas T. Trapp, MD, MS
University of Iowa

Jennifer Coughlin, MD

Johns Hopkins University



Dr. Coughlin has been a faculty member in the Johns Hopkins Department of Psychiatry and Behavioral Sciences since July 2012. She directs the Young Adult Affective Disorders Inpatient Service and the Young Adult Affective Disorders Consultation Clinic. Dr. Coughlin's research focuses on molecular neuroimaging with positron emission tomography (PET). She leads an interdepartmental initiative to apply new PET-based radiotracers to the study of altered immune signaling that may contribute to neurologic and psychiatric conditions. She has published first-author work in high-impact journals such as JAMA Neurology, Translational Psychiatry, and Molecular Psychiatry. Dr. Coughlin's recent work focuses on imaging markers relevant to the role of neuroimmunity in sports-related traumatic brain injury, Alzheimer's disease, Major Depressive Disorder, Bipolar Disorder and recent onset of psychosis. Her imaging work aims to inform the development and application of new therapies targeting neuroimmune signaling and inflammation to promote brain health.

Rebecca Feinstein, MPH, MSW, PhD

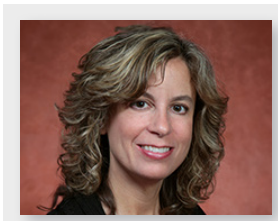
University of Illinois at Chicago



Dr. Feinstein is a Research Assistant Professor in the Department of Psychiatry at the University of Illinois at Chicago & the Director of the Health Equity and Innovative Technologies Program for the Center for Health Equity using Machine Learning and Artificial Intelligence (CHEMA). Dr. Feinstein's primary professional specialization is the administration and implementation of large-scale, multi-site, mixed-methods health care service research studies addressing health disparities and improving systems of health care services for vulnerable populations. Her background in public health practice and clinical social work experience enables her to creatively implement research within real-world clinical settings and community contexts.

Heather Flynn, PhD

Florida State University

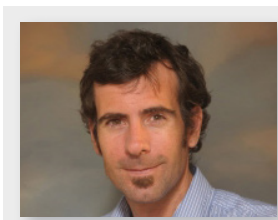


Dr. Flynn is a Professor at the Florida State University (FSU), College of Medicine and Chair of the Department of Behavioral Sciences and Social Medicine. She is Director of the FSU Center for Behavioral Health Integration. Dr. Flynn received her doctorate in clinical psychology from Florida State University, and completed a mental health and substance use fellowship at the University of Michigan Medical School in 1998. She served on the faculty at the UM Department of Psychiatry from 1998-2011, where she co-founded the UM Women and Infants Mental Health Program. Dr. Flynn's research is focused on improved identification, treatment and outcomes for behavioral health disorders, with a particular focus on women and children. As a clinical psychologist, she has worked for over

25 years as a clinician, researcher and trainer in the behavioral health field. Her work is specifically aimed at developing and testing for behavioral health in medical and community settings. Dr. Flynn is also involved in statewide, national and international work on improving behavioral health approaches and outcomes. She is the Co-Chair of the Florida Maternal Mental Health Collaborative, and the Chair of the Women & Mood Disorders Task Group within the National Network of Depression Centers. She has worked with teams to develop international quality standards by implementing processes for practitioner and trainer / supervisor certifications in evidence-based behavioral health treatments including Motivational Interviewing and Interpersonal Psychotherapy. In 2018, Dr. Flynn was appointed to serve on the Florida Governors Mental Health Task Force. She also served as a member of the Florida Statewide Suicide Prevention Task Force, and in 2020 was appointed to the Florida Governors Opioid Task Force. Dr. Flynn is passionate about community-partnered, collaborative work aimed at improving mental health and substance use for families in the US and around the world.

Benjamin R. Lewis, MD

University of Utah



Dr. Lewis is an assistant professor of Psychiatry in the Department of Psychiatry at the University of Utah. He is the medical director of the Huntsman Mental Health Institute Ketamine-Assisted Psychotherapy Clinic and his clinical work also includes adult inpatient psychiatry. His research interests focus on psychedelic-assisted therapy with an emphasis on group-based interventions.

SPEAKER BIOS

Sagar V. Parikh, MD, FRCPC

University of Michigan



Dr. Parikh is the John F. Greden Professor of Depression and Clinical Neuroscience at Michigan Medicine and also a Professor of Health Management and Policy in the School of Public Health at the University of Michigan. He is Medical Director of the National Network of Depression Centers (USA) and Education Chair of the Canadian Network of Mood and Anxiety Treatments. Dr. Parikh is the author / editor of three books and over 200 peer-reviewed articles and book chapters, and co-author of all 10 editions (1997-2021) of CANMAT treatment guidelines for Depression and for Bipolar Disorder. As medical director of Mensante, he helped create a novel internet system for recognition and management of mental disorders. He has a long history of consulting with companies for workplace mental health. He has won multiple awards for education and for

research in psychiatry, including the Dave Davis CEPD Research Award in 2008, the R.O. Jones Award for Best Research Paper in 2011, and Paula Goering Collaborative Research and Knowledge Translation Award in 2018. The Michigan Depression Toolkit, a website tool that he leads, won the 2018 Bronze Digital Health Award. He was awarded the 2019 Academic Gold Award for the Psychiatric Services Achievement, from the American Psychiatric Association, (with Dr. John Greden and Ms. Stephanie Salazar) for the Michigan Peer-to-Peer Depression Awareness Program and the 2020 Mogens Schou Award for Education and Teaching by the International Society for Bipolar Disorders. His teaching has won him three local, three national, and two international awards, including the Paul Patterson Education Innovation Award from the CPA in 2018.

Joanna Quigley, MD

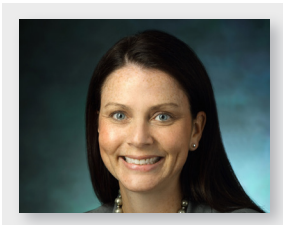
University of Michigan



Dr. Quigley is a Child and Adolescent Psychiatrist who works with the statewide psychiatry access program, MC3. She comes from a background of training in pediatrics as well as psychiatry and often works as the crossroads between general and subspecialty pediatrics, and child psychiatry. At the University of Michigan, Dr. Quigley is the Clinical Associate Professor of Psychiatry and Pediatrics, Department of Psychiatry & Associate Medical Director, Ambulatory Child and Adolescent Psychiatry and Adolescent (UMATS).

Elizabeth K. Reynolds, PhD

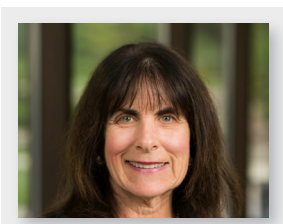
Johns Hopkins University



Dr. Reynolds is an associate professor in the Johns Hopkins School of Medicine, Department of Psychiatry and Behavioral Sciences, Division of Child and Adolescent Psychiatry. She serves as the Directors of the Pediatric Medical Psychology Program and Acute Psychological Services. Her research and clinical interests focus on 1) patient safety, quality, and behavioral programming within psychiatric acute care and 2) social-contextual and self-regulatory factors associated with adolescent health risk behaviors. She has led efforts to develop, implement, and disseminate Positive Behavioral Interventions and Supports (PBIS) to reduce the use of restrictive interventions within acute psychiatric care settings.

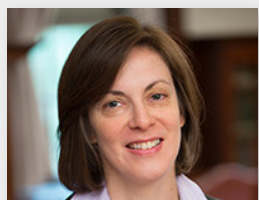
Michelle B. Riba, MD, MS, DFAPA, FAPM

University of Michigan



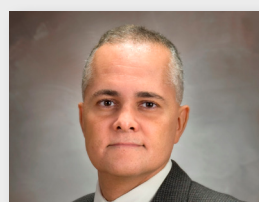
Dr. Riba is Professor of Psychiatry, University of Michigan Medical School, Director of the PsychOncology Program at the University of Michigan Rogel Cancer Center and Co-Director of the Workplace Mental Health Program at the University of Michigan Eisenberg Family Depression Center. Dr. Riba is a board certified consultation-liaison psychiatrist. She formerly served as Associate Chair for Education and Academic Affairs; Associate Chair for Integrated Medical and Psychiatric Services; Director of Residency Training and Director of the Consultation Liaison Fellowship in the University of Michigan Department of Psychiatry; as well as Associate Chair in the University of Michigan Comprehensive Depression Center.

Isabelle Rosso, PhD Brigham and Women's Hospital - Harvard Medical School



Dr. Rosso is a psychologist and neuroscientist who employs multidisciplinary research methods to neural and behavioral underpinnings of trauma- and stress-related illnesses, and to translate that knowledge into clinical applications. She is the Associate Professor of Psychology, Department of Psychiatry, Harvard Medical School & Director, Anxiety and Traumatic Stress Disorders Laboratory, Center for Depression, Anxiety and Stress Research, McLean Hospital.

Jair C. Soares, MD, PhD UTHealth Houston



Dr. Soares is Pat Rutherford Professor and Chair of the Faillace Department of Psychiatry and Behavioral Sciences at the McGovern Medical School, UTHealth Houston. He also is Executive Director of the John S. Dunn Behavioral Sciences Center, as well as Vice-President for Behavioral Sciences at UTHealth Houston. A Board-certified psychiatrist, he directs the UTHealth Center of Excellence on Mood Disorders, which focuses on the search for causes and the development of new treatments for mood disorders. Dr. Soares has published more than 350 peer-reviewed articles and book chapters in the psychiatric literature and has held editorial positions on a number of national and international medical journals. His research has been funded over the years by multiple grants from NIH, VA, private foundations and the pharmaceutical industry. Dr.

Soares is a past President for the American Association for Chairs of Departments of Psychiatry, and the International Society on Affective Disorders. He currently serves as Vice-President for the National Network of Depression Centers (NNDC). Since April 2015, he has been the co-editor in chief for the Journal of Affective Disorders. He also is co-editor in chief for Journal of Affective Disorders Reports, which was launched in 2020. He also serves in the executive council, finance committee and in the travel award committee for the International Society for Clinical Trials Methodology (ISCTM).

Michael E. Thase, MD University of Pennsylvania



Dr. Thase is a professor of psychiatry and director of the Department of Psychiatry's Mood and Anxiety Section at the Perelman School of Medicine at the University of Pennsylvania School of Medicine in Philadelphia, PA. Professor Thase also directs the Mood Disorders Research studies at the Philadelphia VAMC. Dr. Thase obtained his medical degree at Ohio State University in Columbus, OH. He served as an intern, resident, and fellow at the Western Psychiatric Institute and Clinic in Pittsburgh, PA before joining the University of Pittsburgh School of Medicine faculty in 1983. Dr. Thase founded the Depression Treatment and Research Program at Western Psychiatric Institute and Clinic and was its director until his departure in 2007. Dr. Thase is board certified in psychiatry and neurology. Dr Thase's research focuses on the assessment and treatment

of mood disorders, including studies of the differential therapeutics of both depression and bipolar affective disorder. Recent research projects have included studies of novel ketamine-like compounds, a multicenter study of the efficacy of rTMS for depressed veterans, a multicenter trial comparing the effectiveness and tolerability of lithium and quetiapine for bipolar depression, and a large scale noninferiority trial comparing a novel computer-administered form of cognitive therapy versus the conventional 20 session/16-week model of treatment. Dr. Thase is a Distinguished Fellow of the American Psychiatric Association, a Founding Fellow of the Academy of Cognitive Therapy, a member of the American Society of Clinical Psychopharmacology, and Vice Chairman of the Scientific Advisory Board of the National Depression and Bipolar Support Alliance. Dr Thase has been elected to the membership of the American College of Psychiatrists and the American College of Neuropsychopharmacology. Dr. Thase has authored or co-authored more than 900 scientific articles and book chapters and has co-authored or co-edited 17 books.

Nicholas T. Trapp, MD, MS University of Iowa



Dr. Trapp is a neuropsychiatrist and neuroscientist at the University of Iowa. Clinically, he is the director of interventional psychiatry and psychiatric neuromodulation. He sees patients for TMS, ketamine, esketamine, ECT, and DBS. His research is focused on finding methods to optimize neuromodulation treatments in neuropsychiatry, including developing a better understanding of TMS mechanisms.

POSTERS

POSTER SESSION

The posters listed below were submitted in the following two categories:

■ Basic Science

This category features posters dealing with approaches (both biological and psychosocial) to understanding mood disorders, new or repurposed treatments and technologies, monitoring strategies with the potential to improve patient outcomes, or objective measures like biometrics, neuroimaging, bloodwork, or genetics.

■ Clinical Programs

Unified efforts are the best way to expedite technological innovation, dissemination of new information, and translation of research into clinical practice. Posters in this category showcase multidisciplinary programs, demonstrate the efficacy of collaborations beyond academic boundaries, or deal with clinical assessments like patient questionnaires, clinical diagnoses, or clinical interviews.

Posters will be displayed all day on Friday, October 13, 2023, with a dedicated Poster Session from 12:45-2:00pm for attendees to browse, and connect with one another, followed by a Dinner and Awards Ceremony from 6:30-8:30pm announcing the winners in the four poster award categories: Best Overall - Clinical Programs, Best Overall - Basic Science, Best Emerging Scholar - Clinical Programs, and Best Emerging Scholar - Basic Science. Scan the QR Code at the end of this list to view and download the full abstracts.

1 Outcomes of Transcranial Magnetic Stimulation for Major Depressive Disorder at a Midwestern Academic Medical Center

Mohannad Abu Sultanah - Indiana University

2 Outcomes of a Pilot Program on Depression Screening and Post-Screening Intervention in Specialty Clinics at an Academic Health System

Sarah Eyo Asuquo - University of Utah

3 Supercharging Collaboration for Bipolar Research – Breakthrough Discoveries for Thriving with Bipolar Disorder (BD2)

Emily Grace Baxi - Breakthrough Discoveries for Thriving with Bipolar Disorder (BD2)

4 Decreased Conviction for Self-related Trait-knowledge in Depression

Athena L. Biggs - The Ohio State University

5 Effect of MRI-guided Low-intensity Transcranial Ultrasound Stimulation on Amygdala Reactivity

Andrea Boscutti - The University of Texas Health Science Center at Houston

6 Deep brain stimulation for treatment-resistant depression changes plasma metabolic markers

Rafaela Carneiro Cordeiro - The University of Texas Health Science Center at Houston

7 A case of tachyphylaxis following long-term intravenous ketamine for treatment-resistant depression

Stefanie Cavalcanti - Mayo Clinic

8 Update from the NNDC Treatment-Resistant Depression (TRD) Task Group

Susan Conroy - Indiana University

9 Clinical Features and Polygenic Prediction of Patients with Bipolar Disorder from Latin America

Alfredo Cuellar - UANL/Mayo Clinic

10 Hearing Safety of Accelerated TMS: Calculating Daily Noise Dose of the SAINT Protocol for Depression

Bianca Nina De - University of Florida

11 Metabolic and inflammatory biomarkers are linked to the accelerated pace of aging in individuals with bipolar disorder

Camila Nayane De Carvalho Lima - The University of Texas Health Science Center at Houston

12 Cognitive aspects of psychomotor abnormalities in depressed adolescents with mood disorders: A systematic review

Ionna Douka - University of Utah

13 Brief Cognitive Assessment in Clinical Practice for Youth with Bipolar Disorder

Rebekah S. Huber - University of Utah

- 14** **Addressing Racial and Ethnic Disparities associated with Depression Care for Children and Adolescents**
Vanessa Christina D'Souza - Mayo Clinic
- 15** **Lamotrigine Co-Administration May Reduce Effectiveness of Intravenous Ketamine in the Treatment of Major Depressive Episodes**
Rif S. El-Mallakh - University of Louisville
- 16** **Antidepressant and Stimulant Treatment is not Associated with an Earlier Age of the Incident Case of Mania or Psychosis**
Mete Ercis - Mayo Clinic
- 17** **Posttraumatic Stress Disorder (PTSD) is Associated with Abnormal Amygdala and Striatal Signaling of Temporal Prediction Errors During a Passive Reward Learning Task**
Gregory Anthony Fonzo - The University of Texas at Austin
- 18** **An updated meta-analysis of the clinical utility of combinatorial pharmacogenomic testing for adult patients with depression**
Ryan B. Griggs - Myriad Genetics
- 19** **Familiarity with psychiatric pharmacogenomic testing in physicians and advanced practice providers: educational opportunities**
Sagar V. Parikh - University of Michigan
- 20** **Utilization of psychiatric pharmacogenomic testing by primary care physicians and advanced practice providers: confidence and implementation barriers**
Sagar V. Parikh - University of Michigan
- 21** **How does psychedelic use impact mental health in patients with bipolar disorder?**
Maya Ibrahim - The University of Texas Health Science Center at Houston
- 22** **Longitudinal Blood Transcriptomic Changes In Hospitalized Mood Disorders Patients With Suicidal Ideation**
Rohit Lalit Jha - The University of Texas Health Science Center at Houston
- 23** **Electroconvulsive Therapy at a Crossroads: Risk Stratification in a Challenging Case of Depression versus Pseudodementia**
Lauren Marie Katzell - The University of Texas at Austin
- 24** **Epigenetic GrimAge Acceleration and Cognitive Impairment in Bipolar Disorder**
Apurva Kumar - The University of Texas Health Science Center at Houston
- 25** **Electroconvulsive Therapy in Patients Without IV Access: Usage of Totally Implantable Vascular Access Devices**
Ethan Wesley Lau - The University of Texas at Austin
- 26** **Post-mortem RNAseq analysis of the overlap between depression, suicidality, and alcohol use**
Edison Leung - The University of Texas Health Science Center at Houston
- 27** **HOPE: A Pilot Study of Psilocybin Enhanced Group Psychotherapy in Patients with Cancer**
Benjamin R. Lewis - University of Utah
- 28** **A Pilot Study of SAINT in Bipolar I Depression**
Kevin Li - Johns Hopkins University
- 29** **Elevated inflammatory markers and cognitive deficits in patients with bipolar disorder**
Marzieh Majd - Brigham and Women's Hospital
- 30** **Sleep disturbances are highly predictive of major depressive disorder recurrence**
Michael Martin - Takeda Pharmaceuticals, U.S.A, Inc.
- 31** **Ultrasonic deep brain stimulation: Initial results with a new device**
Brian J. Mickey - University of Utah

POSTERS

- 32** **Mitigation of Ketamine-Benzodiazepine Interaction in the Treatment of Major Depressive Episodes**
 Lucas Miozza - University of Louisville
- 33** **Pharmaceutical Pipeline of BI 1358894: Clinical Evidence for an Emerging Drug for the Treatment of Mental Health Conditions**
 Nathan Mitchell - Boehringer Ingelheim
- 34** **The Relationship Between Anhedonia, Reward Circuitry, Childhood Trauma and Stress**
 Dahlia Mukherjee - Penn State Health
- 35** **Association between chronotype and inflammation in bipolar disorder: a pilot study**
 Jennifer Mary Nicolero-SantaBarbara - Brigham and Women's Hospital
- 36** **An update on the efficacy of single and serial intravenous ketamine infusions for bipolar depression: a systematic review and meta-analysis**
 Nicholas N. Nunez - Mayo Clinic
- 37** **The Effect of Clinical rTMS on Glutamatergic Neurometabolites: A Preliminary Meta-Analysis of Proton Magnetic Resonance Spectroscopy Studies in Depressed Populations**
 Maggie K. Pecsok - University of Pennsylvania
- 38** **Elevated Plasma Levels of Proinflammatory Cytokines in Youth at Familial Risk for Bipolar Disorder**
 Francisco Eliecio Rodrigues da Silva - The University of Texas Health Science Center at Houston
- 39** **Non-invasive spinal cord stimulation for MDD: A pilot randomized controlled trial**
 Francisco Romo-Nava - University of Cincinnati & Lindner Center of HOPE
- 40** **Randomized Controlled Trial of Stress Management and Resiliency Training for Depression (SMART-D) vs Treatment as Usual in the treatment of Major Depression**
 Ashok Seshadri - Mayo Clinic
- 41** **Change in Neurocognitive Functioning in Patients with Treatment-Resistant Depression with Serial Intravenous Ketamine Infusions: The Bio-K Multicenter Trial**
 Balwinder Singh - Mayo Clinic
- 42** **PTSD symptoms as a predictor of severity in anxiety clinic patients**
 Claudia Soto de la Cerda - The University of Texas Health Science Center at Houston
- 43** **Fast-Forwarding the Clock: The Accelerated Aging Phenomenon in Bipolar Disorder**
 Natasha Topolski - The University of Texas Health Science Center at Houston
- 44** **Trial-in-progress: Disease characteristics and real-world, standard-of-care effectiveness in patients with major depressive disorder with anhedonia and inadequate response to antidepressants**
 Joseph Trombello - Janssen Research & Development, LLC
- 45** **Characterizing the Subjective Experience of Psychedelic use in Individuals with Bipolar Disorder**
 Lauren Nicole Vale - UTHHealth Houston
- 46** **Evaluation and Feasibility of Oura Ring in Developing Digital Phenotypes of Sleep in Patients with Mood Disorders**
 Alex Walker - Johns Hopkins University
- 47** **Proteomic Profiles and Their Association with Major Depressive Disorder: A Comparative Study Between NESDA and the Pritzker 500**
 Kathleen Watson - Stanford University
- 48** **Mood Impacts of Hypersexuality and the Potential of Naltrexone: A Comprehensive Review of Clinical Trials and Two Case Studies**
 Jonathan Stone - Oakland University

Scan this QR Code to view full abstracts



TRAVEL AWARD RECIPIENTS

Congratulations to the 2023 Emerging Scholar Travel Award Recipients! Each year at the annual conference, the NNDC supports emerging scholars with travel awards to attend and present their research. It is a unique opportunity to gain feedback from recognized leaders in their field, inspire their colleagues, and to compete with all the poster presenters for Best Poster Awards. Check out the posters during the Annual Conference Poster Session at 12:45pm in Live Oak Pre-function space on Friday, October 13th.

ATHENA BIGGS, MS

THE OHIO STATE UNIVERSITY
POSTER #4

DECREASED CONVICTION FOR SELF-RELATED TRAIT-KNOWLEDGE IN DEPRESSION

SUSAN CONROY, MD, PhD

INDIANA UNIVERSITY
POSTER #8

UPDATE FROM THE NNDC TREATMENT-RESISTANT DEPRESSION TASK GROUP

IONNA DOUKA, MD

UNIVERSITY OF UTAH
POSTER #12

COGNITIVE ASPECTS OF PSYCHOMOTOR ABNORMALITIES IN DEPRESSED ADOLESCENTS WITH MOOD DISORDERS: A SYSTEMATIC REVIEW

GREGORY FONZO, PhD

THE UNIVERSITY OF TEXAS AT AUSTIN
POSTER #17

POSTTRAUMATIC STRESS DISORDER (PTSD) IS ASSOCIATED WITH ABNORMAL AMYGDALA AND STRIATAL SIGNALING OF TEMPORAL PREDICTION ERRORS DURING A PASSIVE REWARD LEARNING TASK

EDISON LEUNG, MD, PhD

THE UNIVERSITY OF TEXAS HEALTH SCIENCE
CENTER AT HOUSTON
POSTER #26

POST-MORTEM RNASEQ ANALYSIS OF THE OVERLAP BETWEEN DEPRESSION, SUICIDALITY, AND ALCOHOL USE

KEVIN LI, MD

JOHNS HOPKINS UNIVERSITY
POSTER #28

A PILOT STUDY OF SAINT IN BIPOLAR I DEPRESSION

LUCAS MIOZZA

UNIVERSITY OF LOUISVILLE
POSTER #32

MITIGATION OF KETAMINE-BENZODIAZEPINE INTERACTION IN THE TREATMENT OF MAJOR DEPRESSIVE EPISODES

DAHLIA MUKHERJEE, PhD

PENN STATE HEALTH
POSTER #34

THE RELATIONSHIP BETWEEN ANHEDONIA, REWARD CIRCUITRY, CHILDHOOD TRAUMA AND STRESS

JENNIFER

NICOLORO-SANTABARBARA, PhD

BRIGHAM AND WOMEN'S HOSPITAL
POSTER #35

ASSOCIATION BETWEEN CHRONOTYPE AND INFLAMMATION IN BIPOLAR DISORDER: A PILOT STUDY

MARGARET PECSOK

UNIVERSITY OF PENNSYLVANIA
POSTER #37

THE EFFECT OF CLINICAL rTMS ON GLUTAMATERGIC NEUROMETABOLITES: A PRELIMINARY META-ANALYSIS OF PROTON MAGNETIC RESONANCE SPECTROSCOPY STUDIES IN DEPRESSED POPULATIONS

FRANCISCO ROMO-NAVA, MD, PhD

UNIVERSITY OF CINCINNATI & LINDNER
CENTER OF HOPE
POSTER #39

NON-INVASIVE SPINAL CORD STIMULATION FOR MDD: A PILOT RANDOMIZED CONTROLLED TRIAL

ASHOK SESHADRI, MD

MAYO CLINIC
POSTER #40

RANDOMIZED CONTROLLED TRIAL OF STRESS MANAGEMENT AND RESILIENCY TRAINING FOR DEPRESSION (SMART-D) VS TREATMENT AS USUAL IN THE TREATMENT OF MAJOR DEPRESSION

KATHLEEN WATSON, PhD

STANFORD UNIVERSITY
POSTER #47

PROTEOMIC PROFILES AND THEIR ASSOCIATION WITH MAJOR DEPRESSIVE DISORDER: A COMPARATIVE STUDY BETWEEN NESDA AND THE PRITZKER 500

UTHealth Houston 2023 Mood Disorders Conference

Saturday, October 14, 2023

Time (CT)	Title and Speaker
8:00-8:45am	<i>Check-in and Breakfast</i>
8:45-9:00am	Opening Remarks Jair C. Soares, MD, PhD, UTHealth Houston
Keynote Speaker 1	
9:00-10:00am	Pearls from the Latest Depression Guidelines Sagar V. Parikh, MD, FRCPC, University of Michigan
10:00-10:15am	Q&A session
10:15-10:30pm	<i>Break</i>
Session 1: Depression Through the Lifespan Chair: Jair C. Soares, MD, PhD, UTHealth Houston	
10:30am-11:00am	Depression in Children and Adolescents Jennifer L. Vande Voort, MD, Mayo Clinic
11:00-11:30am	Depression in College Students Marcia R. Morris, MD, University of Florida
11:30am-12:00pm	Depression in Elderly Olusola Ajilore, MD, PhD, University of Illinois at Chicago
12:00-12:15pm	Q&A session
12:15-1:15pm	<i>Lunch</i>
Keynote Speaker 2	
1:15-2:15pm	Reproductive Related Mood Disorders: Postpartum Depression is Only the Tip of the Iceberg C. Neill Epperson, MD, University of Colorado Anschutz Medical Campus
2:15-2:30pm	Q&A session
Session 2: Treatment-Resistant Depression Chair: Joao L. de Quevedo, MD, PhD UTHealth Houston	
2:30-3:00pm	Ketamine/Esketamine for Treatment-Resistant Depression Mark Niciu, MD, PhD, University of Iowa
3:00-3:30pm	Neuromodulation for Treatment-Resistant Depression Patricio Riva Posse, MD Emory University
3:30-4:00pm	Psychotherapy for Treatment-Resistant Depression Jesse H. Wright, MD, PhD, University of Louisville
4:00-4:15pm	Q&A session
4:15-4:30pm	Closing Remarks

The **UTHealth Houston 2023 Mood Disorders Conference**, provided through the UTHealth Houston Faillace Department of Psychiatry and Behavioral Sciences, takes place on **Saturday, October 14, 2023** at the **InterContinental Houston** immediately after the NNDC 2023 Annual Conference. This conference offers clinical focus sessions featuring notable speakers from NNDC member sites.

This conference will explore the greatest clinical challenges across the life-span and in complex clinical scenarios. Interdisciplinary clinicians and scientists will offer new insights from the latest research on major depressive disorder and discuss the role of novel therapeutic approaches for treatment optimization. Attendees will gain practical and valuable knowledge to improve and enhance depression care and overall mental health care in Houston and the surrounding communities.

med.uth.edu/psychiatry



Local Attractions

- **Buffalo Bayou Park** — 160-acre green space occupies 2.3 miles along the city's slow-moving bayou with an abundance of paths, hiking and bike routes, garden areas, and native landscaping.
- **Hermann Park** — sprawling park that includes the Houston Zoo, the Houston Museum of Natural Science, and the Miller Outdoor Theatre, which hosts free concerts throughout the year
- **Museum of Fine Arts** — world-renowned collection of art featuring works from Rembrandt, Picasso, and Van Gogh
- **Museum District** — cultural destination with 19 museums, galleries, and cultural centers

Shops

- **The Galleria** — one of the largest shopping malls in the United States, with over 400 stores and restaurants, including Neiman Marcus, Christian Louboutin, Chanel, and 70 shops exclusive to Houston

Restaurants

- **Brennan's** — offers exceptional Texas Creole fare, including many original creations among award-winning cuisine
- **The Annie Café & Bar** — located in the heart of the Galleria area, this restaurant offers a fresh take on Texas-influenced American cuisine by award-winning Executive Chef Robert Del Grande
- **Doris Metropolitan** — high-end butchery and restaurant that handcrafts modern flavors and techniques that embrace Middle Eastern heritage and elevate the traditional steakhouse experience
- **Caracol** — authentic Coastal Mexican food, award-winning wines & spirits selections
- **Pappas Bros. Steakhouse** — recognized as one of the highest quality restaurants in the nation, this restaurant chain headquarters offers an award-winning wine selection and flavorful dry-aged prime beef steaks



School of Continuous
Professional Development



Join us in Chicago!

National Network of Depression Centers Best Practices for Mood Disorders in Collaboration with Mayo Clinic



Mark your
calendar!

SEPTEMBER 27-28, 2024

**Swissotel
Chicago, IL**

- NNDC best practices is aimed at providing clinically relevant updates for the management of mood disorders and associated comorbidities across the lifespan.
- Topics include updates and clinical pearls on treatment resistant depression and bipolar disorder, new and novel treatments for depression, and when to refer for ketamine, TMS, ECT, psychedelic therapy.
- The NNDC faculty are active clinicians informed by new research, and committed to meet the mission of NNDC; use the power of our network to advance scientific discovery, and provide stigma free, evidence-based care to patients with depressive and bipolar illnesses.
- Course format is a rich, clinical, educational environment of engaging lectures and case-based learning within the context of existing and emerging new research. Breakout seminars are interactive and emphasize collaborative learning.
- This course is designed for the many disciplines and providers including psychiatrists and primary care providers, psychologists, advanced practice providers, nursing, and pharmacists.

ce.mayo.edu/depression2024



NATIONAL NETWORK *of*
DEPRESSION CENTERS



WANT TO BE
FEATURED IN
A NEWSLETTER,
BLOG POST, OR
SOCIAL MEDIA?

SHARE YOUR NEWS WITH US!

RESEARCH NEWS

INCREASE
VISIBILITY

ANNOUNCEMENTS

PROJECTS

REACH A BROADER
AUDIENCE

UPCOMING EVENTS

AWARDS & HONORS

INFORM OTHERS

JOB LISTINGS

Visit the NNDC website to complete the form, email
skharecha@nndc.org for details or speak to NNDC staff at the conference.

BE INFORMED.

SUBSCRIBE TO THE NNDC MONTHLY NEWSLETTER!

- Conference and Events
- Latest Developments
- Network News
- Academic Research
- Job Listings
- and more!



Contact Shilpa Kharecha, NNDC Events & Communications Manager
at skharecha@nndc.org to be added to the mailing list!



GET CONNECTED

FOLLOW US ON SOCIAL MEDIA!



FACEBOOK

@NationalNetworkofDepressionCenters



INSTAGRAM

@nndc_official



LINKEDIN

@NationalNetworkofDepressionCenters



X

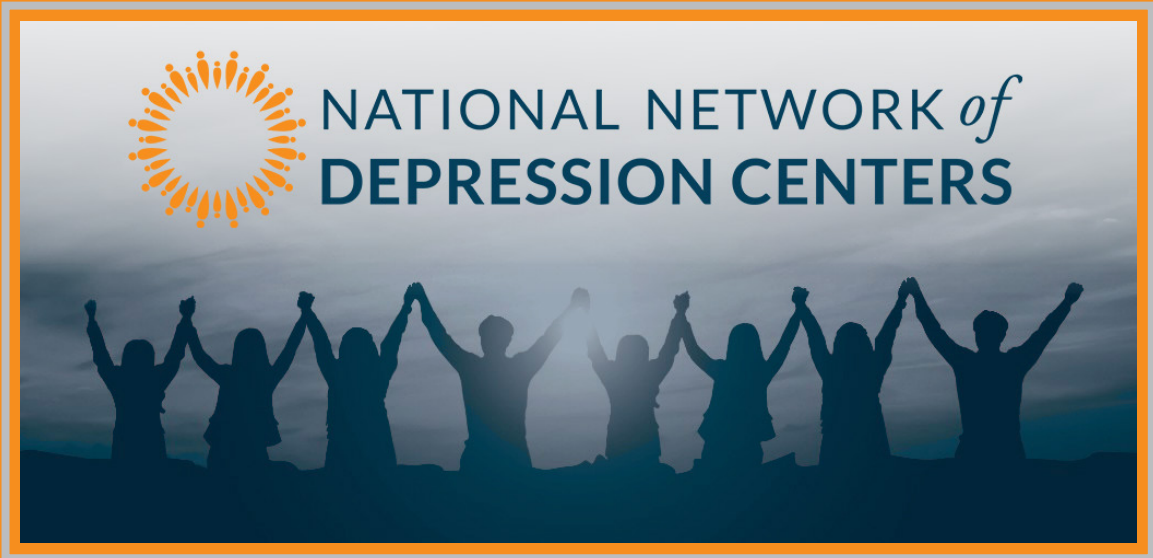
@NNDC_official



NOTES

NATIONAL NETWORK OF DEPRESSION CENTERS (NNDC)

Cultivating Connections to Inspire
Groundbreaking Mood Disorder Research
and Treatment



nndc.org

NNDC 2024 ANNUAL CONFERENCE

Stay tuned throughout the year for information about the NNDC 2024 Annual Conference as we plan more ways to expand our network and develop further resources for the latest developments in mental health research. We appreciate your collaboration, participation, and support. See you next year!